

COMPREHENSIVE VITAL
SIGNS DOCUMENTATION AND
PHYSICAL ASSESSMENT
CAPABILITIES
IN ONE
CONVENIENT
SYSTEM



Welch Allyn
Connex® Integrated Wall System



Welch Allyn Connex® Integrated Wall System

Everything that's vital to improved patient safety, speeding patient flow and saving valuable time and space

The Connex Integrated Wall System is an advanced vitals management and physical assessment solution that has everything a busy emergency department needs to quickly examine the patient and make decisions based on accurate, complete information.

The integration of vital signs management and physical assessment tools in one system:

- Eliminates those frustrating and time-consuming searches for individual pieces of equipment throughout the facility
- Allows clinicians to immediately view patient data, then send it directly to an EMR/HIS system
- Prevents tools from being lost, stolen or misplaced
- Enhances the visibility of information to your patients and improves communication and compliance
- Saves valuable floor space and eliminates tangled, hanging cords
- Provides accurate data every time, speeding decision-making and improving patient safety



- 1 Integrated otoscope and ophthalmoscope:** Choose from a variety of 3.5 V options
- 2 Adult, pediatric and neonatal NIBP modes** featuring SureBP® technology—15-second NIBP and pulse rate
- 3 Choice of Masimo® or Nellcor® pulse oximetry; optional Masimo® noninvasive continuous monitoring of Total Hemoglobin**
- 4 Integrated thermometry and probe cover holder:** SureTemp® Plus oral and/or Braun ThermoScan® PRO 6000 ear thermometry (*choose one or both*)
- 5 Large, easy-to-read color touchscreen**
 - Allows clinicians to show patients their results as they happen for improved communication and patient compliance
 - Configure in spot check, office profile (blood pressure averaging), intervals or continuous monitoring modes, including customizable interval programs
 - Manual measurements entry (*weight, height, respiration rate, pain*) and documentation of modifiers like body position and O₂ therapy)
- 6 Wall-mounted cord/cuff management system** reduces tangled, hanging cords and provides organized storage for extra blood pressure cuffs



4 USB ports to add:

- Select digital weight scales
- Barcode scanning

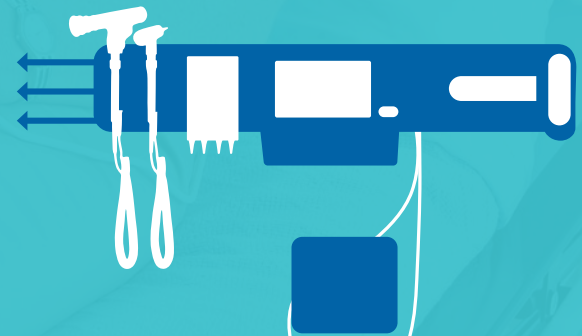
Open architecture design allows you to expand your system

- Supports technology from both Welch Allyn and our manufacturing partners
- Protects your investment and is scalable as your facility needs change
- PartnerConnect™ Service Software-ready for software-driven repairs and upgrades



Immediately send accurate patient vitals directly to your EMR/HIS system

- For connected facilities, reduces the need for manual transcription and practically eliminates transcription errors
- Greatly helps improve patient safety and reduces the time spent documenting vitals
- View patient data anytime, anywhere on the network, improving patient flow and staff communication



Welch Allyn **Partners in CareSM Services** provide you with *flexible choices* to help you manage your investment and cover all your service needs.

Biomed Partnership Program

If you already have an in-house biomed or technician, choose our Biomed Partnership Program. Welch Allyn engineers, technical experts, core intelligence and trainers help biomedics become authorized to repair Welch Allyn products on-site, keeping devices up and running and extending their useful life.

In addition to loaner coverage, free shipping and accessory protection, this program includes:

- Expedited response and turnaround times
- Online technical training
- Remote services and the Welch Allyn Service Tool
- Replacement parts
- Software updates and upgrades

Comprehensive Partnership Program

If you have limited internal resources—or prefer that your staff concentrates on other tasks without relying on third-party providers—choose our Comprehensive Partnership Program, which includes:

- Remote technical support
- Parts and labor at no charge
- Calibration discounts
- Accessory protection
- Software updates and upgrades
- Free shipping
- Expedited turnaround time and loaner coverage

Welch Allyn
PARTNERCONNECT
data friendly center



Welch Allyn
SERVICE TOOL
at customer site

PartnerConnect™ solution enables remote diagnostics as well as software upgrades and updates to your Welch Allyn devices.

**Note: Partners in Care Service is only available in select countries. Please ask your Welch Allyn rep for details.*

For more information about the Connex Integrated Wall System, please contact your local Welch Allyn representative, call 1.800.535.6663 to speak with a customer service representative, or visit www.welchallyn.com.

NELLCOR

Only Nellcor pulse oximetry sensors, including OxiMax patient-dedicated adhesive sensors, should be used with the Nellcor pulse oximetry option. Nellcor and OxiMax are registered trademarks of Nellcor Puritan Bennett, Inc.

BRAUN

Braun and ThermoScan are registered trademarks of Braun, GmbH.

MASIMO SET®

Only Masimo sensors should be used with Masimo Oximetry and Co-Oximetry. Masimo is a registered trademark of Masimo Corporation.

Welch Allyn, Inc.
4341 State Street Road
Skaneateles Falls, NY 13153 USA
(p) 800.535.6663 (f) 315.685.3361

WWW.WELCHALLYN.COM

