



Installation Guide



 <p>Welch Allyn 4341 State Street Road Skaneateles Falls, NY 13153-0220 USA www.welchallyn.com</p>	 <p>European Regulatory Representative Welch Allyn Limited Navan Business Park Navan Co. Meath Ireland</p>
---	---



Copyright 2011, Welch Allyn. All rights are reserved. No one is permitted to reproduce or duplicate, in any form, this manual or any part thereof without permission from Welch Allyn.

Caution: Federal US law restricts sale of the device identified in this manual to, or on the order of, a licensed physician.

Welch Allyn assumes no responsibility for any injury, or for any illegal or improper use of the product, that may result from failure to use this product in accordance with the instructions, cautions, warnings, or indications for use published in this manual.

Welch Allyn is a registered trademark of Welch Allyn, Inc. CardioPerfect is a trademark of Welch Allyn, Inc.

Software in this product is copyright Welch Allyn or its vendors. All rights are reserved. The software is protected by United States of America copyright laws and international treaty provisions applicable worldwide. Under such laws, the licensee is entitled to use the copy of the software incorporated within this instrument as intended in the operation of the product in which it is embedded. The software may not be copied, decompiled, reverse-engineered, disassembled or otherwise reduced to human-perceivable form. This is not a sale of the software or any copy of the software; all right, title and ownership of the software remains with Welch Allyn or its vendors.

For information about any Welch Allyn product, please call Welch Allyn Technical Support:

USA	1 800 535 6663	Australia	+ 61 29 638 3000
	+ 1 315 685 4560		
Canada	1 800 561 8797	China	+ 86 216 327 9631
European Call Center	+ 353 46 906 7790	France	+ 331 6009 3366
Germany	+ 49 747 792 7186	Japan	+ 81 33 219 0071
Latin America	+ 1 305 669 9003	Netherlands	+ 31 15 750 5000
Singapore	+ 65 6419 8100	South Africa	+ 27 11 777 7555
United Kingdom	+ 44 207 365 6780	Sweden	+ 46 85 853 6551

Before contacting Welch Allyn it is helpful to attempt to duplicate the problem and to check all accessories to ensure that they are not the cause of the problem.

When calling, please be prepared to provide:

- Product name and model number and complete description of the problem
- The serial number of your product (if applicable)
- The complete name, address and phone number of your facility

Contents

About This Manual	3
Cautions	3
Installing the Webstation	4
Pre-installation	4
Which Webstation components are installed?	4
Installing the Webstation	4
Install Welch Allyn CardioPerfect Webstation.....	4
Configuration of Internet Information Server (IIS).....	5
Database Maintenance	8
Create a backup device	8
Make a backup	9
Restore the database.....	10
Appendix A Database installation.....	10

About This Manual

The Welch Allyn CardioPerfect Webstation is the internet/intranet extension to the PC-based CardioPerfect medical diagnostic workstation. The Webstation lets you view and confirm resting and stress ECG tests in a web browser.

This manual is a guide for installing and configuring the Webstation.

Cautions



For best performance of the CardioPerfect Webstation, follow the minimum configuration requirements as listed on the CD jacket.

CardioPerfect Webstation should only be installed by personnel knowledgeable with Windows software installations and configuring Internet Information Services (IIS).

Installing the Webstation

Pre-installation

Welch Allyn CardioPerfect Webstation has a client/server structure. The Webstation application is hosted on the server computer while the client computers require a web browser to access the Webstation application.

Server

A prerequisite for the Webstation server is Microsoft Internet Information Services (IIS). Before installing the Webstation software on a server, install CardioPerfect Workstation with a valid license key. There are two server components in the CardioPerfect Webstation: a web server application running within IIS and a database running on Microsoft MSDE or SQL Server database management system. It is possible to install these components on different computers on the network.

Unlike the CardioPerfect Workstation setup, the Webstation setup will not install the database server. If the Webstation database component is to be installed on a different computer than the CardioPerfect Workstation database, ensure MSDE or SQL Server 7 or higher is installed before continuing.

Client

The web application operates within either the http protocol or https protocol. If necessary, firewall settings should be altered to allow http and/or https communication.

A valid SSL certificate (not supplied) is required to be installed if HTTPS is required.

Non-persistent cookies or in-memory cookies should be enabled within the browser.

Which Webstation components are installed?

When you install Welch Allyn CardioPerfect Webstation, you can choose from a number of components:

Web Application	The Welch Allyn CardioPerfect Webstation client software. The license that you purchased determines which modules are installed.
Administration Tool	The Welch Allyn CardioPerfect Webstation Admin Tool.
Database	The Welch Allyn CardioPerfect Webstation database.

Installing the Webstation

Install Welch Allyn CardioPerfect Webstation

To install Welch Allyn CardioPerfect Webstation:

1. Make sure that you have administrator rights.
2. Close all running programs.
3. Insert the CD and the installer application should launch automatically. If this does not happen, browse the CD and double click on the file Setup.exe.
4. Enter your Name, Company, Serial Number, and Release Code.
5. From the components list, select 'Web Application' and 'Administration Tool'. If this server

is also the database server select the 'Database' option. If not, then the database component needs to be installed on your database server – refer to Appendix A for further details.

6. Choose a destination directory for the software; the default is C:\Program Files\Cardio Control\Web.
7. If the database component is not installed on the same computer, specify the name of the server and the name of the database (ccweb by default) in the *Web Connection Settings* window.
8. If your CardioPerfect Workstation database is not present on the computer, specify the server name and database name (ccdb by default) of the computer on which the CardioPerfect Workstation database is installed.
9. Start and Finish the installation.

Configuration of Internet Information Server (IIS).

Once the Webstation installation has completed, IIS needs to be configured to create the Webstation website:

1. Create a virtual directory and assign it the alias/name of 'ccweb' (without the quotation marks), and ensure the virtual directory has permission to execute ASP scripts.
2. Set the application path for this virtual directory to be the ASP subfolder of the Webstation install folder.
(By default this is C:\Program Files\Cardio Control\Web\ASP)
3. By default, access permissions are set to exclude Windows Authentication. If Windows Authentication is required, this can be set within the virtual directory properties in IIS. Existing CardioPerfect Workstation users will have to be given access to Webstation through the Web Administration tool – refer to the Configuration section below for more details.
4. If your IIS version is 64-bit:
 - The Application Pool assigned to the Webstation virtual directory will need to be enabled for 32-bit applications.
 - The ccweb virtual directory will need to be changed from a Virtual Directory to an Application.
5. Open a web browser and type <http://localhost/ccweb>.
If Windows Authentication is not enabled then a CardioPerfect Webstation login page should be visible.
If Windows Authentication is enabled, and the Windows account has been added to the list of valid Webstation users, the default Default.asp page will be displayed.
Note: If errors are reported, repeat the installation procedure including "Configuration of Internet Information Server (IIS)". If still unsuccessful, please contact Technical Support.

License

To access the Webstation website, you need to configure the Webstation first. This can be done using the Web Administration Tool, which can be found by selecting *Programs -> Welch Allyn -> Web Administration Tool* from the Start menu. To logon to this tool, use any CardioPerfect Workstation user with administration rights, such as the 'admin' user.

When logged on, select *License* from the list on the left. The administration tool should look similar to Figure 1. If required, click on the button *Change...* and enter the *Serial number* and *Release code* that came with your copy of the CardioPerfect Webstation. If the license information was entered successfully, the available modules should appear in the list at the bottom of the window.

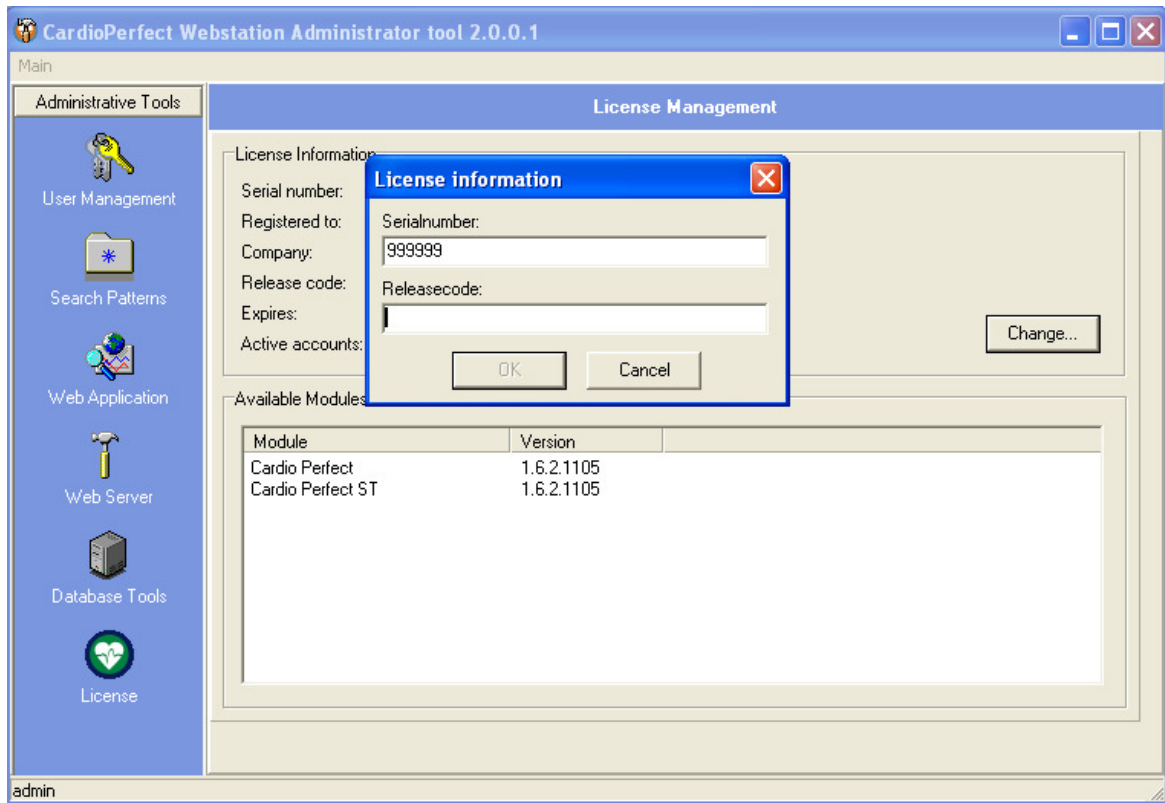


Figure 1. License screen of the Web Administration Tool

Configuration

Go to the *User Management* section by clicking on its icon on the menu bar on the left (see Figure 2). Edit the default user settings for each user by clicking on the *Edit default Profile*. Please consult the CardioPerfect Workstation manual on specific user preferences because these are similar to the ones found in the CardioPerfect Workstation.

When you are satisfied with the default user preferences start adding users either by *Add from CCW* if you already have CardioPerfect Workstation users, or use *New User* to add a new web user. Depending on the license you have bought you might be limited to a certain number of user accounts.

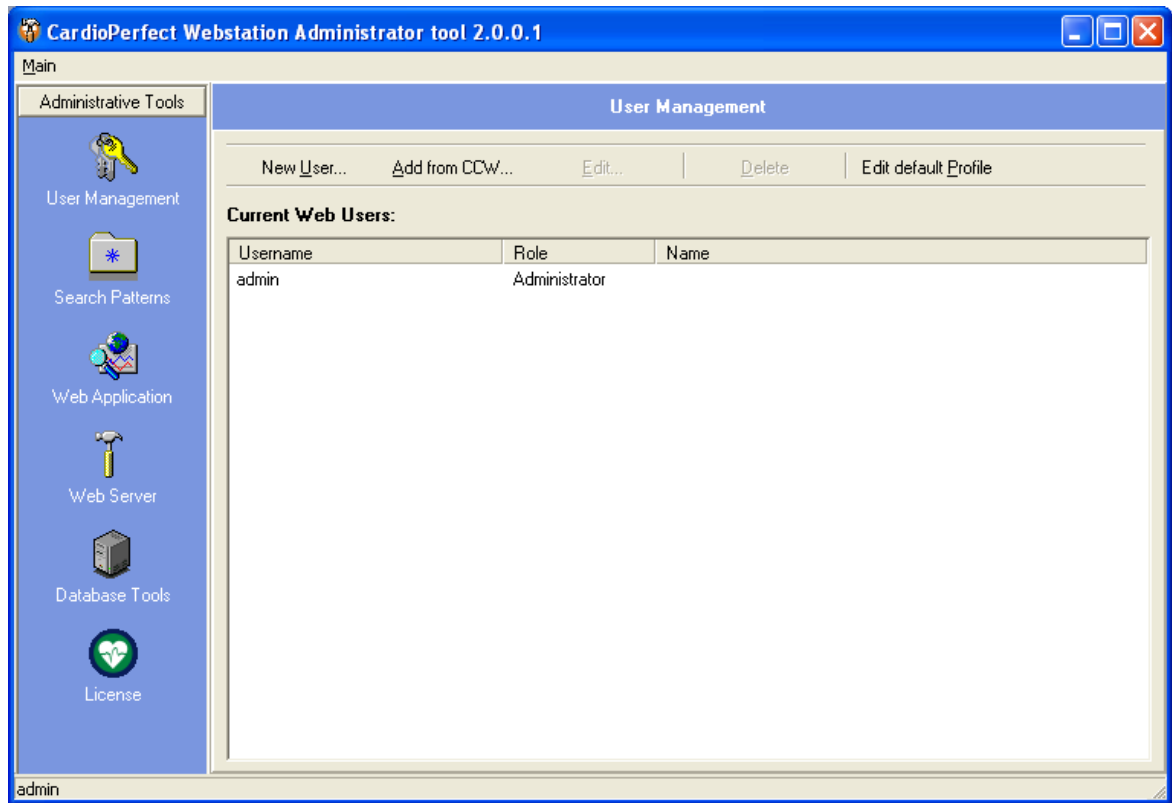


Figure 2. Web Administration: add new users or add from CardioPerfect Workstation

Return to the web browser, you should be able to login and begin using the CardioPerfect Webstation. To access the website from another computer, use the address <http://webservername/ccweb>, where *webservername* is the name of the computer connected through either a *Local Area Network* or the internet.

Final step

You should have a basic installation of the CardioPerfect Webstation running on your web server. You can access different sections of the *Web Administration Tool* by clicking on the icons in the menu bar on the left.

Database Maintenance

In a computer environment, there is always a possibility that something goes wrong: hard disks can crash, databases can be corrupted, system software can fail and users can make mistakes. When one of these events takes place, database tables may be lost or corrupted. To minimize the impact of data loss you should backup your files regularly.

With the Administrator tool, you can make a full backup of your Webstation database, which contains the settings of the Webstation. During the backup, copies of the database and the transaction log are made. These copies can be used to restore the database. After the backup, the transaction log is truncated.

To access these options open the Web Administration Tool and select **Database Tools**.

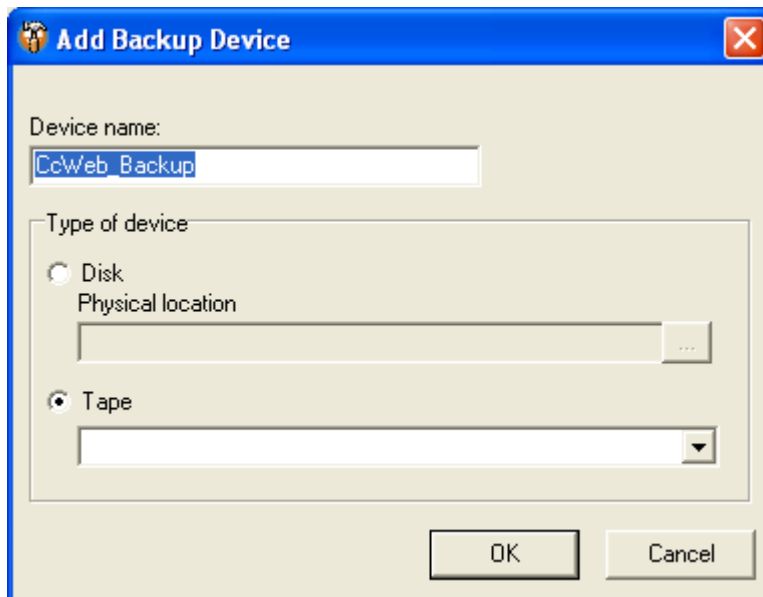
Create a backup device

Before you can make a backup of the database, you need to create a backup device. A backup device is a place where you store the backup. It can be a file on your hard disk or network drive, or a tape.

We advise you to create a backup device on a different hard disk than the one that contains the database. If you do not do this, you run the risk of losing both your database and your backup if your computer crashes.

To create a backup device:

1. Click the tab **Backup database**.
2. Click the **Add...** button. The **Backup device** dialog box is displayed.



3. Enter the name of the backup device.
4. Select the device type.

Disk Select the location where the backup is created and enter a filename.

When you select a network drive, make sure you have the proper permissions to access the backup directory and file.

Tape Select the tape and enter a filename.

Make sure that the tape driver is connected to the computer that

runs SQL server.

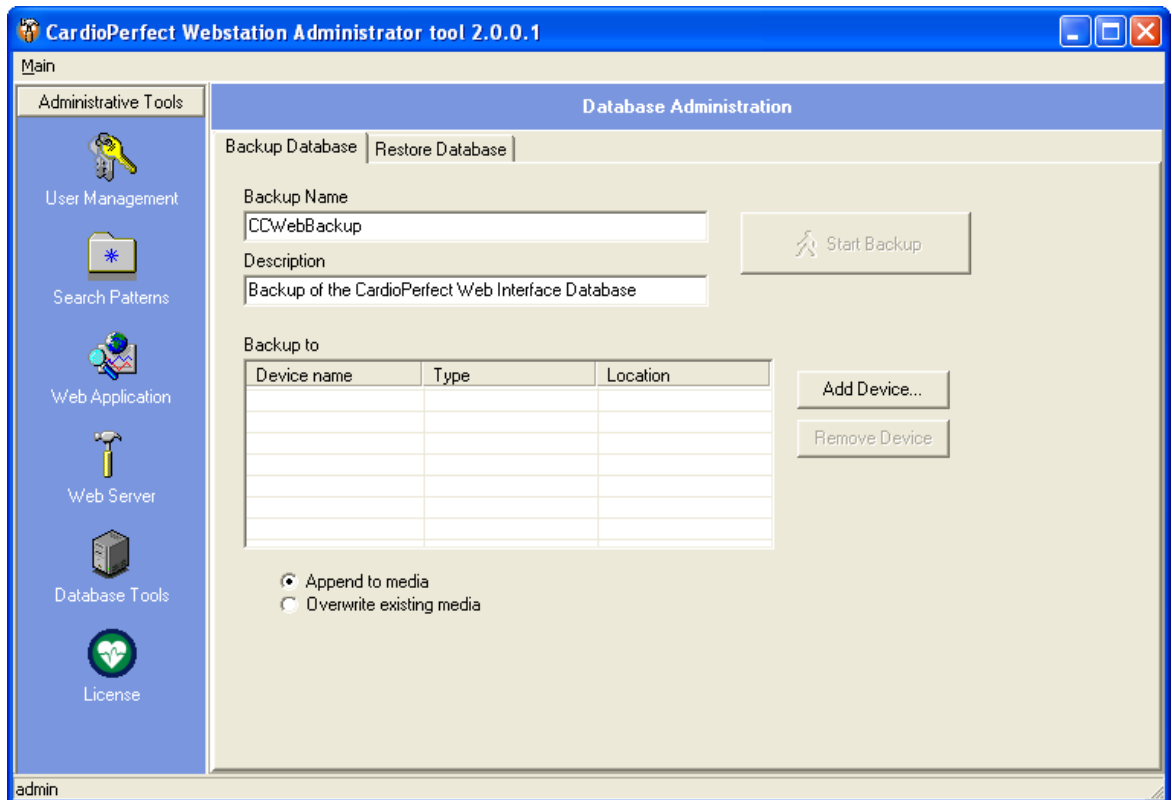
Make a backup

The simplest way to create a backup is to create one manually. You can do this anytime you want; existing Webstation users do not have to log out.

Before you can make a backup, you need to have created a backup device.

To make a manual backup:

1. Select **Backup database**.



2. Enter a name and a description for the backup.
3. Select the backup device to which you want to backup the database.
4. Select the type of backup that you want to make.

If you select...

Append to media

Overwrite existing media

Then...

The backup is added to the already existing backup on the selected backup device.

The new backup overwrites the already existing backup. The existing backup is lost.

5. Click the **Start Backup** button to start the backup process.

Restore the database

Restoring is the process of recovering a database backup. Several situations can arise that might require the recovery of the database.

Problem evaluation

Prior to the recovery of the database you should evaluate the situation very carefully. What is wrong with the database and what is the date of the most recent database backup?

Important: When performing a database restore you can only recover the database to the point of the latest backup. Any changes made to the database after the last backup will be lost.

To restore a database:

1. Make sure that all users are logged out. You cannot restore the database while it is being used.
2. Under **Database tools**, click on the tab **Restore database**.
3. Select the backup that you want to restore. If you have moved your backup files to a different location, use the **Locate backup file...** button to locate the backup files.
4. Click on the **Restore Database** button. A warning is displayed.
5. Click **Yes** to start with the restore process. When the restore process was successful, a message is displayed.

Appendix A Database installation

The Web Database Builder (webddbbuilder.exe available on the installation CD) is a utility for creating and updating databases for Webstation on SQL Server. It is compatible with MS-SQL Server 7, MSDE or higher.

The name of the server and the database name for creating or upgrading are required. When creating a new database, the data folder where the physical files are created must also be given. This folder must already exist.

For all actions, the Database Builder program will attempt to login into the database with a few default known user/password combinations. If these fail the program will ask for the password of the sa user.

Create new database

In case the database does not exist on the target server a new database will be created. The following steps are automatically taken:

Create a new database with the given name on the server with a default size of 10 MB and automatic growth of 10 percent. A transaction log file is also created. The files are created in the database folder.

Add server logins for user ccweb when it does not exist.

Run the script ccweb.sql. This script must be present in the folder of the Web Database Builder program.

Run the script ccwebdata.sql. This script must be present in the folder of the Web Database Builder program.

Update existing database

When the given database already exists on the target server, this database will be upgraded. The following steps are automatically taken:

1. Check version of current database.
2. Look for a script named upgradexxx.sql, where the xxx will be replaced by the numbers of the current version. If this script is found in the Database Builder folder it is executed.

The Web Database Builder command-line

All tasks of the database builder can be set from the command-line. The following command-line options are defined:

/server=name. Set the target server to name.

/database=name. Set the database that must be created or updated to name.

/datadir=name. Set the folder for the database files when creating a new database to name.

/linkto=name. Set the name of the server where the CardioPerfect Workstation database is located.

/execute. Directly perform the database create or update.

/quit. Immediately quit the application after other tasks are performed.

4341 State Street Road, PO Box 220, Skaneateles Falls, NY
13153-0220 USA
1 800 535 6663, + 1 315 685 4560 www.welchallyn.com

WelchAllyn®

Advancing Frontline Care™