

Baxter

TECHNICAL
SERVICE



Welch Allyn Service Tool

**SIMPLIFYING MAINTENANCE
FOR MORE SYSTEM UPTIME**

The Information You Need is Right at Your Fingertips

Let **Baxter** help minimize interruptions to patient care with a streamlined process for proactive and routine maintenance. The **Welch Allyn Service Tool** can help you simplify device service and minimize the resources needed for repairs to help reduce equipment downtime and keep devices in the hands of your caregivers.



With the Welch Allyn Service Tool, you can:

- Install software updates and upgrades
- Perform device verification and calibration
- Troubleshoot devices
- Minimize off-site repairs
- View reports and important device information

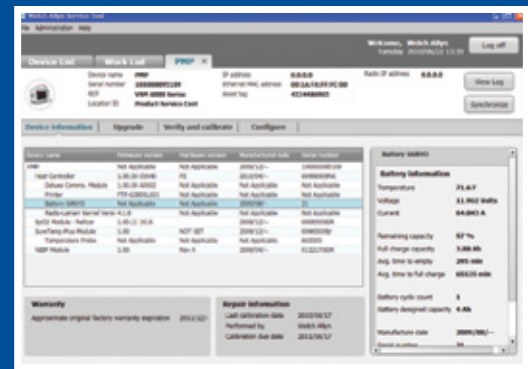
We're Here to Lend an Ear

Conveniently collaborate with **Baxter** service technicians via our remote network for real-time device support.



1 REVIEW PRODUCT INFORMATION & MANAGE USER ACCOUNTS

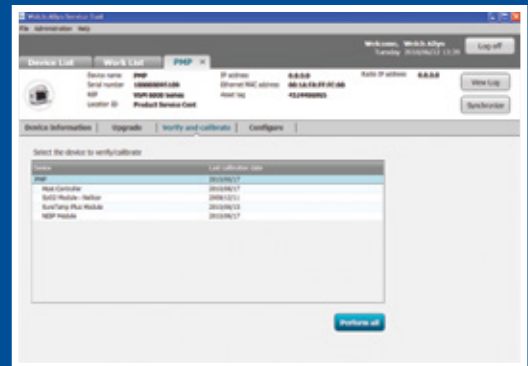
- Manage lists of installed modules, firmware and hardware versions, warranty details, repair information, device status and usage history.
- Create user accounts and set permission levels to control who has access to device features and who can perform administrative tasks versus service tasks.



Review product information

2 MANAGE & MAINTAIN YOUR INVENTORY

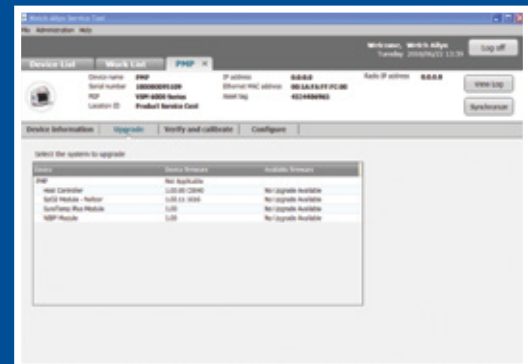
- Track your entire inventory of supported **Baxter** solutions with automatic notifications for firmware updates and feature upgrades.



Verification

3 INSTALL UPDATES & UPGRADES

- Manage solutions that are eligible for firmware upgrades.
- Add new plug-ins to support future **Baxter** products.



Receive notifications of updates and upgrades

4 SCHEDULE MAINTENANCE, MANAGE LOG FILES & RECOVER DEVICES

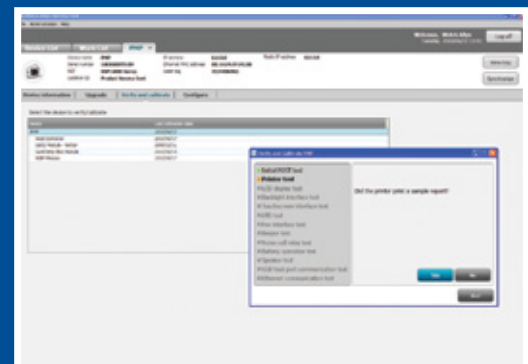
- Set device service intervals for periodic maintenance.
- Download and save device log files for analysis to help diagnose and identify reported issues.
- Reinstall firmware in rare cases where a device can no longer boot.

5 FUNCTIONAL VERIFICATION

- Test each component of a device's system to ensure performance meets design specifications.

6 CALIBRATION VERIFICATION

- Check any system requiring calibration and, if necessary, perform re-calibration to match the design specifications^{1,2}



Calibration

Welch Allyn Service Tool

WELCH ALLYN SERVICE TOOL LICENSING INFORMATION

Silver Edition License	This edition of the Welch Allyn Service Tool comes as standard with your new Welch Allyn device(s).
Gold Edition License ³	This edition of the Welch Allyn Service Tool is required to perform functional verification and requires a license. Online training is also included as a standard feature.

SYSTEM REQUIREMENTS

Supported Operating Systems	Microsoft® Windows 10 X64 Pro and/or Windows 11
Supporting Software	.Net Framework 3.5
Driver	WACP USB driver (Included with installation)
Processor	400 MHz Pentium processor or equivalent (Minimum) 1 GHz Pentium processor or equivalent (Recommended)
RAM	1 GB (Minimum) 2 GB (Recommended)
Hard Disk	Up to 10 GB of available space may be required
Display	800 x 600, 256 colors (Minimum) 1024 x 768 high color, 32-bit (Recommended)
USB	USB 2.0 (Required)
Antivirus Protection	(Recommended)
Internet Connection	(Required to download files)

Looking to take your device management to the next level? Ask your **Baxter** representative how adding Remote Management can help you take control of the health and wellbeing of your connected devices.

Baxter.com

Microsoft and Windows are trademarks of Microsoft Corporation.

¹ Please see the service manual for the recommended service intervals. This feature is not supported on all products and requires a Gold Edition License for each supported product.

² Some sensors and modules cannot be calibrated using the Welch Allyn Service Tool.

³ To qualify for the Gold Edition License, you must attend a Technical Training course or complete online training. Please contact your Baxter sales representative for additional information.

Baxter reserves the right to make changes without notice in design, specifications and models. The only warranty Baxter makes is the express written warranty extended on the sale or rental of its products.

Baxter and Welch Allyn are trademarks of Baxter International Inc. or its subsidiaries.
US-CS00-240070 (v1.0) 10/2024