

TruSystem® 7000dV Surgical Table

Redefining Patient Positioning in da Vinci® Surgery



The Trumpf Medical™ TruSystem® 7000dV Surgical Table is designed to work with Integrated Table Motion for the *da Vinci Xi*® Surgical System from Intuitive Surgical.

Integrated Table Motion (ITM) enables the *da Vinci Xi*® System to connect to Trumpf Medical's TruSystem® 7000dV Surgical Table so the patient can be dynamically positioned while the surgeon operates.

Iso-centered motion is achieved through ultra-smooth, electromechanical actuation allowing for simultaneous Trendelenburg or reverse Trendelenburg and slide creating a virtual pivot point.

TruSystem® 7000dV Options

The TruSystem® 7000dV Surgical Table is outfitted with patient positioning accessories for a complete solution. Package options may vary, though mainly consist of the following accessories:

- Double Joint Head Section
- Single Part Leg Section
- dV Remote Control
- dV Connection Cable
- Lightweight Transfer Board
- Armboards
- Component Cart
- Patient Restraint Strap
- Rotatable Footboard & Clamps
- Multi-task Armboard & Clamp*

With any TruSystem® 7000dV Operating Table two years of comprehensive service coverage and maintenance is included.



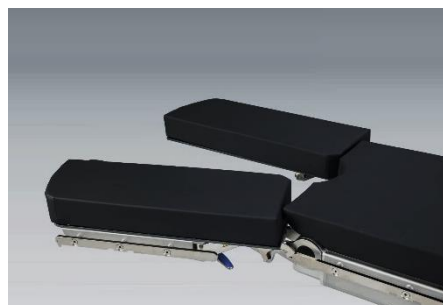
Dramatic Range of Motion

Patient Weight Capacity	1,000 lb (450 kg)	Exceptional weight capacity in any articulation, including slide
Height Range ¹	23 - 45" (59 - 114 cm)	Ultra low and high platform for the surgical team, including the surgical robot
Trendelenburg / reverse Trendelenburg	± 45°	Superior positioning to expose target anatomy, including during robotic-assisted surgery

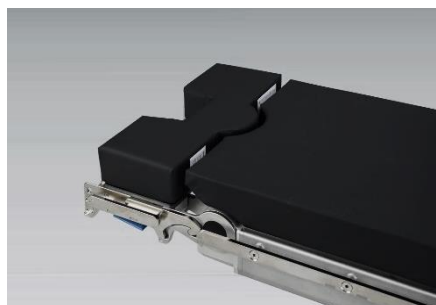
¹ Values are subject to a general industry tolerance of ± .4" (1 cm)

Additional Accessories

Trumpf Medical offers an additional accessory package of specialty components that optimize patient positioning capabilities for complex robotic-assisted surgeries.



Two-Part Leg Section for midline access.



Pelvic Extension for enhanced imaging capability.



TrenGuard for secure, steep Trendelenburg positioning.

da Vinci and da Vinci Xi are trademarks or registered trademarks of Intuitive Surgical, Inc.

*Not included in all packages; Packages subject to change

TruSystem® is a registered trademark of TRUMPF GmbH + Co. KG.

Trumpf Medical reserves the right to make changes without notice in design, specifications and models. The only warranty Trumpf Medical makes is the express written warranty extended on the sale or rental of its products.

©2018 Trumpf Medical Systems, Inc. ALL RIGHTS RESERVED.
201476 rev 3 21-MAY-2018 ENG - US

TruSystem® 7000dV Surgical Table

Redefining Patient Positioning in da Vinci® Surgery



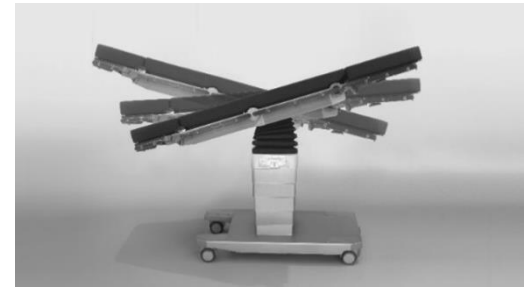
The Trumpf Medical™ TruSystem® 7000dV Surgical Table is designed to work with Integrated Table Motion for the *da Vinci Xi*® Surgical System from Intuitive Surgical.

The TruSystem® 7000dV Surgical Table is:

- Uniquely compatible with the *da Vinci Xi*® Surgical Robot, yet also serves as a versatile general surgical table for all specialties.
- Synchronized motion with the *da Vinci Xi*® System for intraoperative re-positioning.
- Dramatic range of motion with high patient weight capacity in all table articulations.

Integrated Table Motion

Integrated Table Motion enables the *da Vinci Xi*® System to connect to Trumpf Medical's TruSystem® 7000dV Surgical Table so the patient can be dynamically positioned while the surgeon operates. This allows the surgical team to efficiently manage the patient and utilize gravity for optimal exposure and access to the target anatomy.



Iso-centered motion: a combination of Trendelenburg or reverse Trendelenburg and slide.



Dynamic Access & Exposure

Use gravity to expose anatomy, maximize reach, and deliver tissue at an ideal working angle.



Efficient Workflow for Every Case

Save time by eliminating the need to undock, resulting in shorter case times and the ability to provide intraoperative patient-supine-relief.



Seamless Integration with Precise Feedback

The *da Vinci Xi*® System and TruSystem® 7000dV Surgical Table connect wirelessly, and provide feedback on table angles for the surgical team.

da Vinci and *da Vinci Xi* are trademarks or registered trademarks of Intuitive Surgical, Inc.

TruSystem® is a registered trademark of TRUMPF GmbH + Co. KG.

Trumpf Medical reserves the right to make changes without notice in design, specifications and models. The only warranty Trumpf Medical makes is the express written warranty extended on the sale or rental of its products.

©2018 Trumpf Medical Systems, Inc. ALL RIGHTS RESERVED.
208383 rev 1 17-MAY-2018 ENG - US