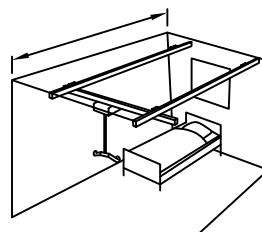


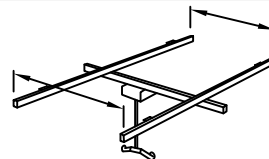


# Hillrom™

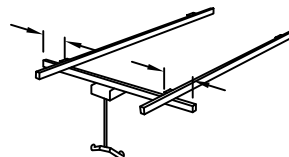
HILLROM  
1069 STATE ROUTE 46 EAST  
BATESVILLE, IN 47006  
PHONE: (812) 934-7777  
FAX: (812) 934-8189  
[www.hillrom.com](http://www.hillrom.com)



MAXIMUM DISTANCE BETWEEN WALLS			
MAX. LOAD	200 KG / 440 LBS	230 KG / 507 LBS	250 KG / 550 LBS
H100	3300 MM / 130"	3000 MM / 118"	2500 MM / 98"
H140	6000 MM / 236"	5500 MM / 216"	4800 MM / 189"
H160	7400 MM / 290"	6800 MM / 267"	5600 MM / 220"
H180	8600 MM / 338"	8000 MM / 315"	6500 MM / 256"



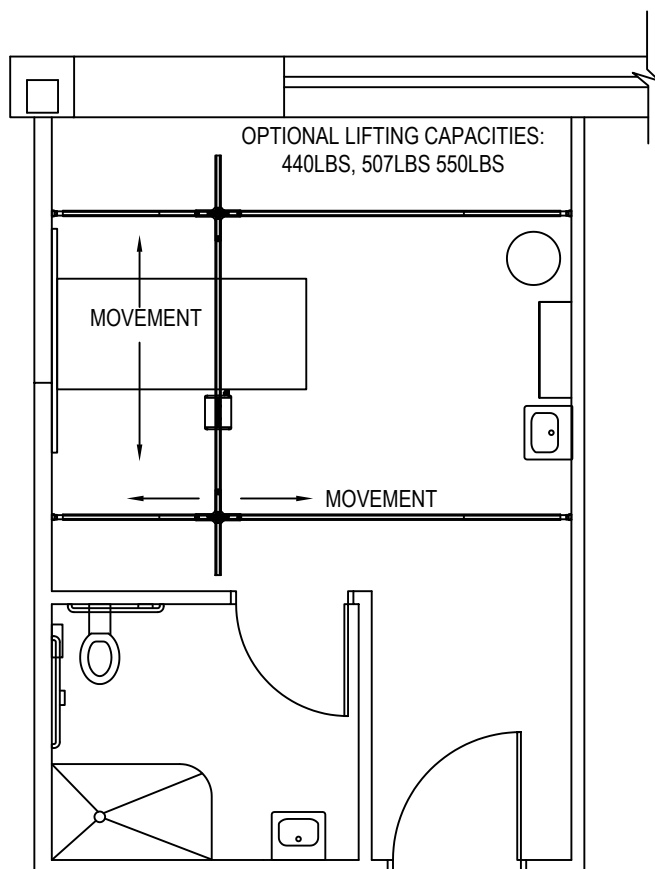
MAXIMUM (C/C) DISTANCE BETWEEN PRIMARY RAILS			
MAX. LOAD	200 KG / 440 LBS	230 KG / 507 LBS	250 KG / 550 LBS
H70	2200 MM / 86"	2000 MM / 78"	1500 MM / 59"
H100	3300 MM / 130"	3000 MM / 118"	2500 MM / 98"
H140	6000 MM / 236"	5500 MM / 216"	4800 MM / 189"
H160	7400 MM / 290"	6800 MM / 267"	5600 MM / 220"



MAXIMUM (C/C) DISTANCE PRIMARY RAILS			
MAX. LOAD	200 KG / 440 LBS	230 KG / 507 LBS	250 KG / 550 LBS
H70	2200 MM / 86"	2000 MM / 78"	1500 MM / 59"
H100	3300 MM / 130"	3000 MM / 118"	2500 MM / 98"
H140	6000 MM / 236"	5500 MM / 216"	4800 MM / 189"
H160	7400 MM / 290"	6800 MM / 267"	5600 MM / 220"

SECONDARY RAIL: DISTANCE BETWEEN SECONDARY RAIL AND THE CENTER OF ITS NEAREST PRIMARY RAIL. MEASURE BOTH ENDS OF THE SECONDARY RAIL IN THE SYSTEM.

NOTE: THE DISTANCE OF THE SECONDARY RAIL'S OVERHANG MUST NEVER EXCEED 25% OF THE DISTANCE BETWEEN THE PRIMARY RAILS.

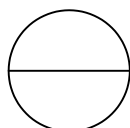


PLAN VIEW

© [[2018]] HILLROM SERVICES, INC. ALL RIGHTS RESERVED.

#### NOTES:

1. INSTALLATION TO BE COMPLETED IN ACCORDANCE WITH MANUFACTURER'S SPECIFICATIONS.
2. DO NOT SCALE DRAWING.
3. THIS DRAWING IS INTENDED FOR USE BY ARCHITECTS, ENGINEERS, CONTRACTORS, CONSULTANTS AND DESIGN PROFESSIONALS FOR PLANNING PURPOSES ONLY. THIS DRAWING MAY NOT BE USED FOR CONSTRUCTION.
4. ALL INFORMATION CONTAINED HEREIN WAS CURRENT AT THE TIME OF DEVELOPMENT BUT MUST BE REVIEWED AND APPROVED BY THE PRODUCT MANUFACTURER TO BE CONSIDERED ACCURATE.
5. CONTRACTOR'S NOTE: FOR PRODUCT AND COMPANY INFORMATION VISIT [www.CADdetails.com/info](http://www.CADdetails.com/info) AND ENTER REFERENCE NUMBER 4794-040



## OVERHEAD (NON-BARIATRIC)

TRAVERSE LIFT SYSTEM: BASIC, WALL MOUNTED