



## TL 1000 EXAM LIGHT

**Item Description:** LED Examination Light for a wide range of applications

**Model Number:** T1000 / T1000B / T1000W / T1000M

**JSN Number:** \_\_\_\_\_

**Installation:** \_\_\_\_\_

**Proposal Number:** \_\_\_\_\_

**Facility:** \_\_\_\_\_

**City, State:** \_\_\_\_\_

**Estimated Delivery:** \_\_\_\_\_

**Delivery Cost:** \_\_\_\_\_

**Taxes:** \_\_\_\_\_

### PRODUCT STANDARD FEATURES

Long life cycle, low power consumption, and low production of heat of the individual LED lenses

Multi-lens matrix ensures evenly distributed light in both surface and depth

Small, compact design

Lightweight and easy to maneuver

On/Off and intensity function on the lighthead

### ROOM ENVIRONMENT

- Intensive Care Unit (ICU)
- Trauma / Emergency Room (ER)
- Exam Room
- Other: \_\_\_\_\_

### CONFIGURATION OPTIONS

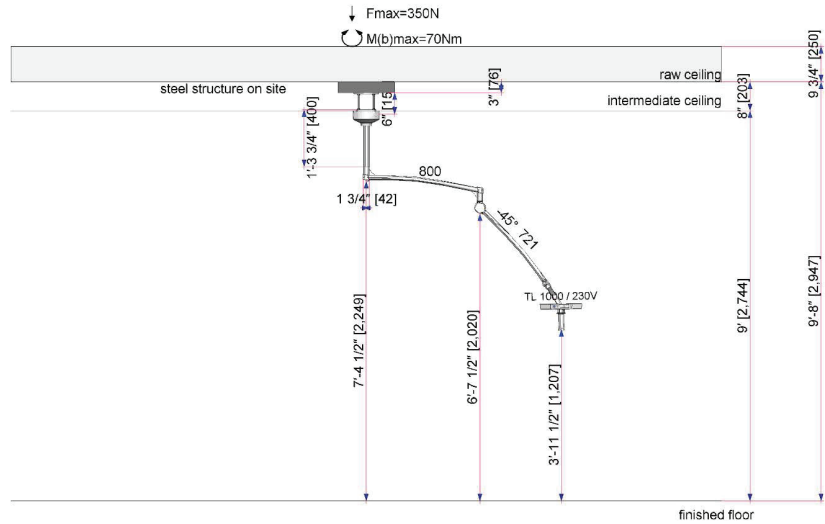
- T1000 - TL 1000 Exam Light with Ceiling Mount
- T1000B - TL 1000 Exam Light with Boom Mount
- T1000W - TL 1000 Exam Light with Wall Mount
- T1000M - TL 1000 Exam Light with Mobile Mount

## TL 1000 EXAM LIGHT

**Item Description:**  
LED Examination Light for a wide range of applications

**Model Number:**  
T1000 / T1000B /  
T1000W / T1000M

**JSN Number:**  
\_\_\_\_\_



## TECHNICAL SPECIFICATIONS

### PHYSICAL CHARACTERISTICS

Soffit Cover	7" diameter by 5" deep (178 mm x 127 mm)
Down Tube	7.8" - 39.4" (200 mm - 1000 mm) (in 200 mm increments)
Horizontal Arm	800 mm
Articulating Spring Arm Length	28.3" (721 mm)
Vertical Travel (max.)	35° up / 45° down; 44.75" (1136 mm) Maximum
Light Rotation	360° continuous - main arm; spring arm; yoke; 210° at lighthead

### LIGHTING SPECIFICATIONS

Lighthead Size	12" (300 mm)
Number of LEDs	18
Central Luminance at 1M	80,000 Lux
Illumination Levels	100% - 30%; 3 step
Pattern Size (d10) at 1M	6.3" (160 mm)
Color Temperature	4500 K
Color Rendering Index	95
Average Service Life of LEDs	> 50,000 hours

### ELECTRICAL CONNECTIONS

Input Voltage to Power Supply	100 - 240 V
Frequency	50 / 60 Hz
Maximum Power Consumption of Total System	50 VA
Output Voltage from Power Supply	24 VDC (±10%)



hillrom.com

Hill-Rom reserves the right to make changes without notice in design, specifications and models. The only warranty Hill-Rom makes is the express written warranty extended on the sale or rental of its products.