

## EXCLUSIVE OFFER ON WELCH ALLYN SOLUTIONS FOR FEDERALLY-QUALIFIED COMMUNITY HEALTH CENTERS



April 15 – December 31, 2022

### Improving Chronic Care Management?

Ask how an investment in our latest diagnostic solutions can help your team detect and manage prevalent, chronic health issues.

Unlock up to \$15,000 in rebates when you purchase any combination of four qualifying devices.

#### ENHANCE THE PHYSICAL EXAM



**\$300 Rebate**

##### Green Series 777 Integrated Wall System

Qualifying Models: 777-PM3WAS-US,  
777-PM3WAX-US, 777-PM3WCX-US,  
777-PM3WXS-US, 777-PM3WXX-US



**\$300 Rebate**

##### Welch Allyn Universal Charger and Desk Set

Qualifying Model:  
71-PM3LDE-US

#### HEART AND LUNG HEALTH



**\$300 Rebate**

##### Diagnostic Cardiology Suite with Optional Spirometry

Qualifying Models:  
CC-RXX-WAXX, CC-RXX-WADX,  
CC-RXX-AAXX, CC-RXX-AADX,  
DCSS-CXX, DCSS-NXX



**\$300 Rebate**

##### Welch Allyn ELI 280

Qualifying Models:  
ELI280-AAA-AAFBD,  
ELI280-CAA-AAFBD,  
ELI280-CAA-AAFBT,  
ELI280-AAA-AAFBT,  
BUR280-C1X, BUR280-81X,  
BUR280-W1X



**\$250 Rebate**

##### Welch Allyn CP 150 Resting ECG

Qualifying Models:  
CP150A-1ENB,  
CP150AS-1ENB,  
CP150AW-1ENB,  
CP150AWD-1ENB

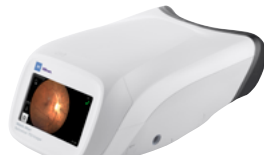
#### VISION HEALTH



**\$400 Rebate**

##### Welch Allyn Spot Vision Screener

Qualifying Model: VS100S-B



**\$800 Rebate**

##### Welch Allyn RetinaVue 700 Imager\*

Qualifying Model: RV700-B  
\*RetinaVue Software subscription  
required as part of the RetinaVue  
care delivery model.

#### HYPERTENSION SCREENING



**\$200 Rebate**

##### Welch Allyn Connex Spot Monitor

Qualifying Models:  
73 Series, 74 Series,  
75 Series



**\$300 Rebate**

##### Welch Allyn Connex Integrated Wall System

Qualifying Models:  
84MTVE2-US, 84MTVX2-US,  
84NTVE2-US, 84NTVX2-US,  
85MTVE3-US, 85MTVX3-US,  
85NTVE3-US, 85NTVX3-US

Talk to your Hillrom representative to purchase, then visit [hillrom.com/improvechroniccare22](http://hillrom.com/improvechroniccare22) to redeem these offers.



[hillrom.com](http://hillrom.com)

Offer available on eligible purchases made April 15 - December 31, 2022, by Federally Qualified Community Health Centers only. To be eligible for offer, customer must purchase at least 4 Qualifying Devices identified in this document on one purchase order and provide proof of purchase as indicated on the redemption form found at [www.hillrom.com/improvechroniccare22](http://www.hillrom.com/improvechroniccare22). Limit one rebate submission per customer for up to a maximum total rebate amount of \$15,000. The maximum rebate amount applies per customer, regardless of the number of customer locations (i.e., a customer is subject to the maximum rebate amount of \$15,000 regardless of whether the customer has 1 location or 100 locations). All information must be submitted via the online redemption process by February 15, 2023. Customers must submit a completed W-9. Promotion valid in U.S. only. Distributor stocking orders do not qualify. Please allow 12 weeks for receipt of rebate check. Promotion cannot be combined with any other promotion, offer, coupon, enhanced discount or special pricing arrangement; some exclusions may apply.

Baxter, Hillrom, Connex, Diagnostic Cardiology Suite, ELI 280, Green Series, RetinaVue, Spot Vision Screener, Welch Allyn are trademarks of Baxter International, Inc. or its subsidiaries.

ALL RIGHTS RESERVED. APR348501 Rev 2 DD-SEPT-2022 US-ENG