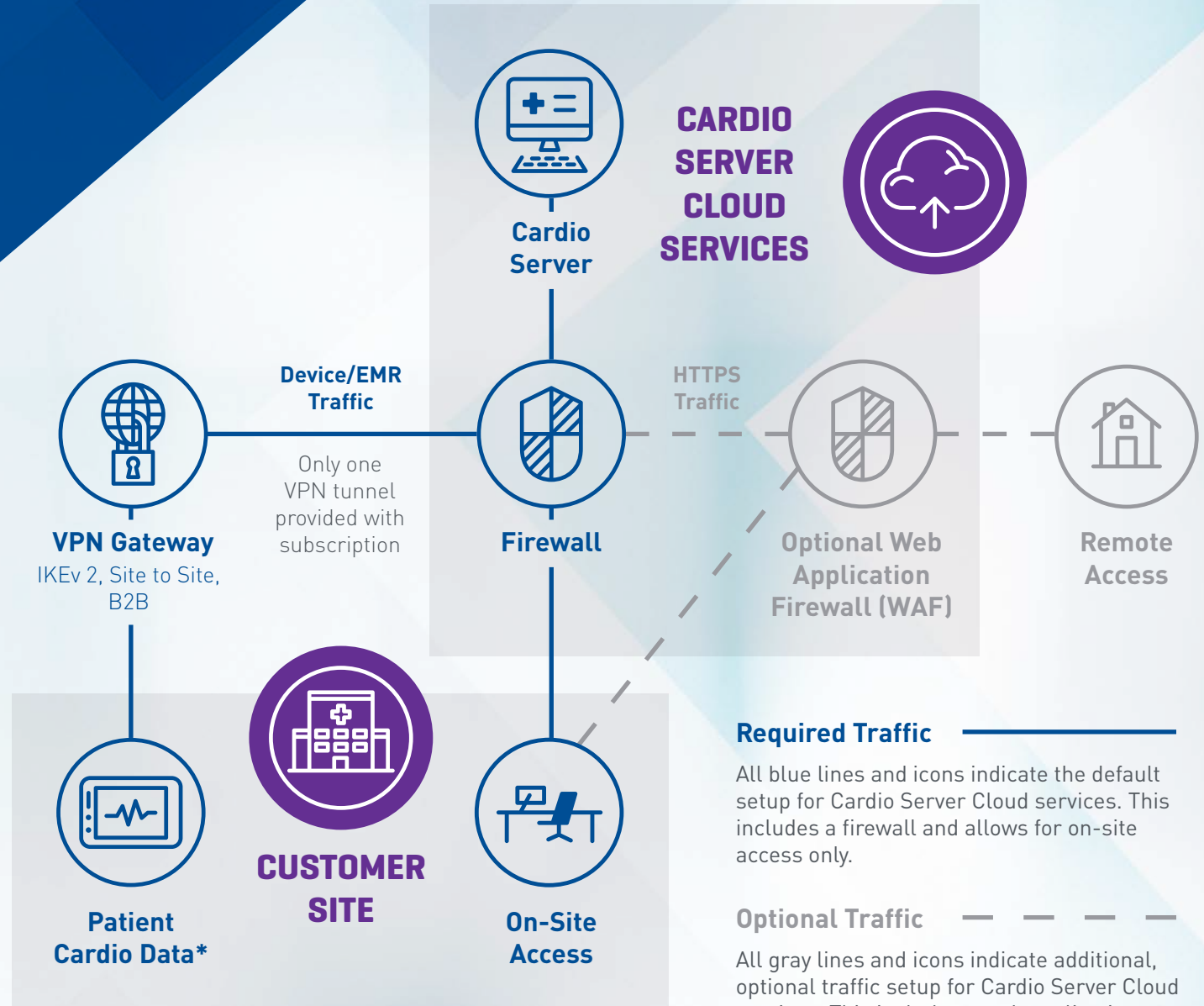




# CARDIO SERVER Cloud Diagram



Simplify cardiopulmonary data management with Cardio Server Cloud. Reduce server requirements, storage, and IT costs. Save your hospital time and resources to focus on delivering the best patient care while we focus on the rest.



\* Cardio data can include: ECG; Holter; Event; Stress; Defib; PFT; Patient Monitors; Rhythm Strip Monitoring (RSM); HL7; Oximetry; Vascular; Cardiac Rehab; EEG; Resting Rhythm; Signal Averaged ECG; ICD; PDF; Tilt Table Test; Sleep; ABP; CPET/CPX; Pacemaker Follow-Up; MCT

**Required Traffic** —————  
All blue lines and icons indicate the default setup for Cardio Server Cloud services. This includes a firewall and allows for on-site access only.

**Optional Traffic** - - - - -  
All gray lines and icons indicate additional, optional traffic setup for Cardio Server Cloud services. This includes a web application firewall (WAF) and allows for remote access. On-site access can also flow through the WAF, if desired.