

# EXCLUSIVE OFFER ON WELCH ALLYN SOLUTIONS FOR COMMUNITY HEALTH CENTERS

APRIL 1 - DECEMBER 31, 2023

## HELP IMPROVE CHRONIC CARE MANAGEMENT

Ask how an investment in our latest diagnostic solutions can help your team detect and manage prevalent, chronic health issues. Unlock up to \$15,000 in rebates when you purchase any combination of four qualifying devices.

### HEART AND LUNG HEALTH



**\$300 REBATE**

#### Diagnostic Cardiology Suite with Optional Spirometry

Qualifying Models:  
CC-RXX-WAXX,  
CC-RXX-WADX,  
CC-RXX-AAXX,  
CC-RXX-AADX,

**\$150 Rebate Spirometry only**  
Qualifying Models:  
DCSS-CXX, DCSS-NXX

**\$300 REBATE**

#### ELI 280

Qualifying Models:  
ELI280-AAA-AAFBD,  
ELI280-CAA-AAFBD,  
ELI280-CAA-AAFBT,  
ELI280-AAA-AAFBT,  
BUR280-C1X,  
BUR280-81X,  
BUR280-W1X

**\$250 REBATE**

#### CP 150 Resting ECG

Qualifying Models:  
CP150A-1ENB,  
CP150AS-1ENB,  
CP150AW-1ENB,  
CP150AWD-1ENB

### HYPERTENSION SCREENING



**\$200 REBATE**

#### WELCH ALLYN CONNEX Spot Monitor

Qualifying Models:  
73 Series, 74 Series,  
75 Series

**\$300 REBATE**

#### WELCH ALLYN CONNEX Integrated Wall System

Qualifying Models:  
84MTVE2-US, 84MTVX2-US,  
84NTVE2-US, 84NTVX2-US,  
85MTVE3-US, 85MTVX3-US,  
85NTVE3-US, 85NTVX3-US

### VISION HEALTH



**\$500 REBATE**

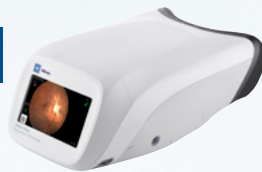
#### WELCH ALLYN SPOT VISION Screener

Qualifying Model: VS100S-B

**\$800 REBATE**

#### WELCH ALLYN RETINAVUE 700 Imager\*

Qualifying Model: RV700-B  
\*RetinaVue Software subscription required as part of the RetinaVue care delivery model.



### ENHANCE THE PHYSICAL EXAM



**\$300 REBATE**

#### GREEN SERIES 777 Integrated Wall System

Qualifying Models: 777-PM3WAS-US,  
777-PM3WAX-US, 777-PM3WCX-US,  
777-PM3WXS-US, 777-PM3WXX-US



**\$300 REBATE**

#### Welch Allyn Universal Charger and Desk Set

Qualifying Model: 71-PM3LDE-US

Talk to your Baxter representative to purchase, then visit [hillrom.com/improvechroniccare](https://hillrom.com/improvechroniccare) to redeem these offers.

Offer available on eligible purchases made April 1 - December 31, 2023, by Federally Qualified Community Health Centers only. To be eligible for offer, customer must purchase at least 4 Qualifying Devices identified in this document on one purchase order and provide proof of purchase as indicated on the redemption form found at [hillrom.com/improvechroniccare](https://hillrom.com/improvechroniccare). Limit one rebate submission per customer for up to a maximum total rebate amount of \$15,000. The maximum rebate amount applies per customer, regardless of the number of customer locations (i.e., a customer is subject to the maximum rebate amount of \$15,000 regardless of whether the customer has 1 location or 100 locations). All information must be submitted via the online redemption process by February 15, 2024. Customers must submit a completed W-9. Promotion valid in U.S. only. Distributor stocking orders do not qualify. Please allow 12 weeks for receipt of rebate check. Promotion cannot be combined with any other promotion, offer, coupon, enhanced discount or special pricing arrangement; some exclusions may apply.

Baxter.com

Baxter International Inc.  
Baxter, Connex, ELI, Green Series, Hillrom, RetinaVue, Spot and Welch Allyn are trademarks of Baxter International Inc. or its subsidiaries.