



Hillrom™



## iLED® 7 Surgical Light

The World in a New Light

# INTELLIGENT LIGHTING

**Innovative technology is a key factor to consider when improving the OR environment. With its new generation of LED OR lights, Hillrom is once again setting new standards: the iLED® 7 Surgical Light — the LED light that reacts.**



At Hillrom, clinical needs, patient safety and ease of use are always primary considerations in the development of new products. Accordingly, the revolutionary technology of the iLED® 7 Surgical Light enables OR personnel to work under optimum lighting conditions at all times.

The automated lighting management system uses the latest 3D sensor technology to continuously analyze the surgical site. By interpreting the conditions, the light automatically adapts and eliminates the need for manual adjustment. In addition, an innovative shadow management system ensures unwanted shadows, such as those cast by the surgeon's head, are compensated for automatically. The surgeons are able to fully concentrate on the patient and the task at hand.

## Why the iLED® 7 Surgical Light is the right choice:

- The lighting management system automatically maintains the brightness, color temperature and a consistent pattern size.
- The unique shadow management system ensures superior illumination at all times.
- Once the desired settings are established, lighting conditions remain consistent at working distances between 31" and 51".





# THE SMART FEATURES OF THE iLED<sup>®</sup> 7 SURGICAL LIGHT

## SMARTSHADOW

The iLED® 7 Surgical Light's 3D sensor system provides consistent lighting conditions and eliminates unwanted shadows, even when the surgeon is working directly beneath the light head. The system identifies obstacles in the field of illumination and activates or deactivates individual LED modules accordingly. As a result, the surgical field is properly illuminated without the need for manual adjustment allowing the surgeon to focus on the patient and the task at hand.



3D sensor technology provides consistent lighting of the surgical site.

## SMARTILLUMINATION

When the light head is repositioned, the 3D sensor automatically adjusts to ensure a consistent illumination level. This eliminates any manual readjustments to the lighting conditions — saving time and allowing the surgeon to focus on the surgical site.



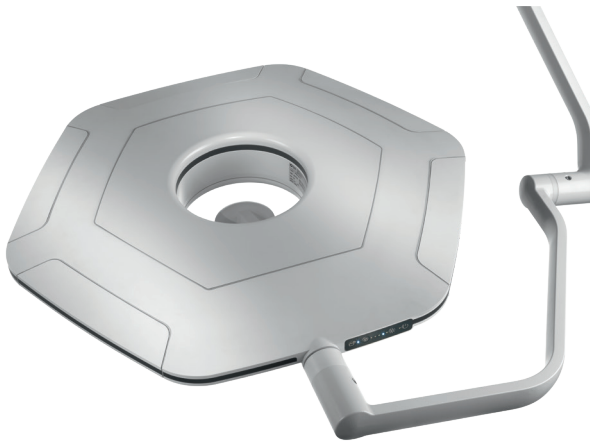
Consistent illumination at typical working distances.

## SMARTFLEXIBILITY

The flexible interface allows the light head to be fitted with standard, disposable, camera and sterile light control handles. Therefore, all light heads are camera ready — enabling you to upgrade your light head at any time.



All iLED® 7 Surgical Light's are camera ready — enabling you to upgrade at any time.



**Streamlined design  
for enhanced air flow.**

## SMARTDESIGN

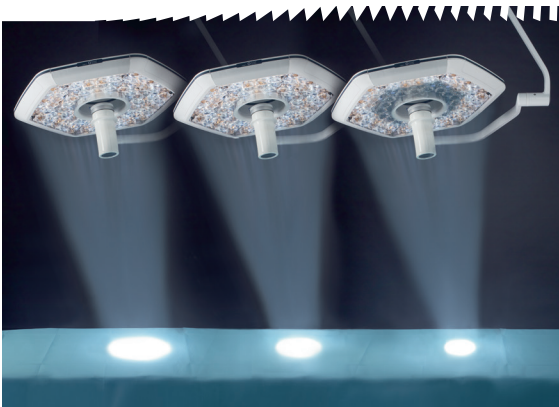
The slim design of the iLED® 7 Surgical Light, developed from specific requirements of OR personnel, is ideal for conventional or laminar air flow systems. Key design elements include the opening in the center of the light, the rounded edges and smooth surfaces, making it easy to clean. Additionally, the compact design and lightweight materials support and simplify positioning.



**Intuitive and reliable wall control.**

## SMARTCONTROL

The iLED® 7 Surgical Light uses an intuitive, touchscreen interface to adjust features of the light before or during the surgical case. In addition, a sterile handle option is available for surgeon control.



**Optional pattern sizes: 10", 8" or 6".**

## SMARTPATTERN

Once the surgeon has selected the pattern size (6", 8" or 10"), the light head automatically maintains that size throughout the procedure, at any typical working distance.



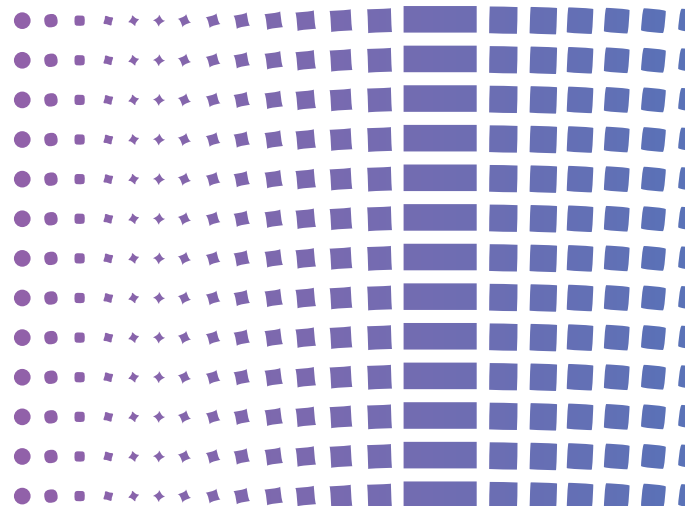
## COMPATIBLE WITH THE LATEST GENERATION OF CAMERAS

The iLED® 7 Surgical Light can be directly connected to the innovative TVW Wireless Camera System via the handle, providing clear images in full HD. Individual images for documentation purposes are possible using the snapshot function. Benefits of wireless technology: ability to install and/or upgrade this system with minimal additional cost or the need for complex video cabling.

TVW Wireless Camera System provides excellent image quality and encrypted transfer provides maximum data security.

### Technical Specifications

|  |                                |
|--|--------------------------------|
| Illumination level $E_c$ in 1 m (lx)                     | 160,000                        |
| Focusable light field size (d10) in 1 m                  | 6.3-9.8"<br>(16-25 cm)         |
| Color temperature (K)                                    | 3,500   4,000<br>4,500   5,000 |
| Color rendering index (Ra)                               | max. 97                        |
| Dimming range (%)  | Endo <5<br>30-100%             |
| Depth of illumination (L1+L2) at 20% $E_c$ / 2nd Edition | 76" with ALC Plus<br>(193 cm)  |
| Shadowing with 1 shadower without tube                   | 92%                            |
| Shadowing with 1 shadower with tube                      | 91%                            |
| Shadowing with 2 shadowers without tube                  | 68%                            |





**Hillrom™**

## **ABOUT HILLROM**

Hillrom is a global medical technology leader whose 10,000 employees have a single purpose: enhancing outcomes for patients and their caregivers by advancing connected care. Around the world, our innovations touch over 7 million patients each day. They help enable earlier diagnosis and treatment, optimize surgical efficiency and accelerate patient recovery while simplifying clinical communication and shifting care closer to home. We make these outcomes possible through connected smart beds, patient lifts, patient assessment and monitoring technologies, caregiver collaboration tools, respiratory care devices, advanced operating room equipment and more, delivering actionable, real-time insights at the point of care. Learn more at [hillrom.com](https://hillrom.com).

**For more information, please contact your local distributor or Hillrom sales representative at 1-800-535-6663.**

**[hillrom.com](https://hillrom.com)**

130 E. Randolph St. Suite 1000, Chicago, IL 60601

---

Hill-Rom reserves the right to make changes without notice in design, specifications and models. The only warranty Hill-Rom makes is the express written warranty extended on the sale or rental of its products.

© 2020 Hill-Rom Services, Inc. ALL RIGHTS RESERVED. APR53903 rev 1 12-MAR-2020 ENG – US