

TS 7000DV SURGICAL TABLE

REDEFINING PATIENT POSITIONING IN DA VINCI® SURGERY

The TS 7000dV Surgical Table is:

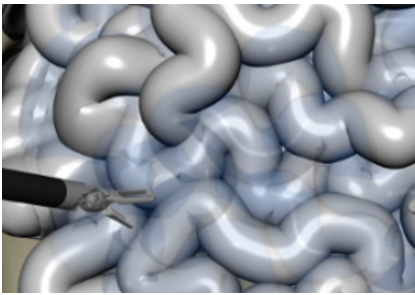
- Uniquely compatible with the *da Vinci Xi*® Surgical Robot, yet also serves as a versatile general surgical table for all specialties.
- Synchronized motion with the *da Vinci Xi*® System for intraoperative re-positioning.
- Dramatic range of motion with high patient weight capacity in all table articulations.



Iso centered motion: a combination of Trendelenburg or reverse Trendelenburg and slide.

Integrated Table Motion

Integrated Table Motion enables the *da Vinci Xi*® System to connect to Hillrom's TS 7000dV Surgical Table so the patient can be dynamically positioned while the surgeon operates. This allows the surgical team to efficiently manage the patient and utilize gravity for optimal exposure and access to the target anatomy.



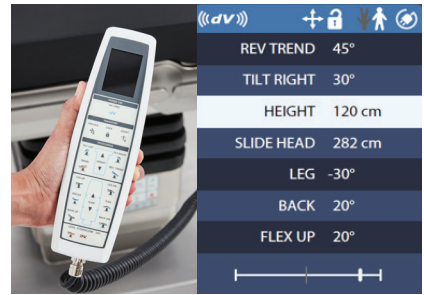
Dynamic Access & Exposure

Use gravity to expose anatomy, maximize reach, and deliver tissue at an ideal working angle.



Efficient Workflow for Every Case

Save time by eliminating the need to undock, resulting in shorter case times and the ability to provide intraoperative patient supine relief.



Seamless Integration with Precise Feedback

The *da Vinci Xi*® System and TS 7000dV Surgical Table connect wirelessly, and provide feedback on table angles for the surgical team.

For more information, please contact your local distributor or Hillrom sales representative at 1-800-535-6663.

hillrom.com

da Vinci and da Vinci Xi are trademarks or registered trademarks of Intuitive Surgical, Inc.

Hill-Rom reserves the right to make changes without notice in design, specifications and models. The only warranty Hill-Rom makes is the express written warranty extended on the sale or rental of its products.

© 2020 Hill-Rom Services, Inc. ALL RIGHTS RESERVED. APR80702 rev 2 31-JUL-2020 ENG - US