

# Advance Table L2P™ Platform

Minimally invasive lateral spine surgical access made simple with this unique platform that provides lateral flex and the ability to rotate your patients directly from the lateral to prone position.



The Advance Table L2P Platform can be used with the Allen® Advance Table\* to provide a flexing, lateral surgical patient support platform. The accessories in this set allow a lateral patient to be rotated directly onto the prone supports via the manual rotation capabilities of the Allen Advance Table.\*

- Utilize the Allen Advance Table for lateral procedures\*
- Create patient flex to open the surgical space
- Single support pad to help reduce shear when flexing
- Integrated air bladder for additional patient flex
- Locks at 90° intervals\*
- Works for left or right side lateral approaches
- Eliminates the need to log roll into prone position
- C-Arm and O-Arm access
- Compatible with standard Advance Rail Top
- Patient Weight Capacity: 400 lbs (181 kg)



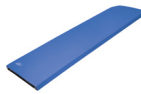
\*Only compatible with tables with auxiliary power port. For tables without auxiliary power port, please check with your Allen Representative or call Customer Service to confirm compatibility.

# Advance Table L2P™ Platform

## What's Included



#A-71701  
Advance Lateral Top  
1 Included



#A-71703  
Advance Lateral Top Pad  
1 Included



#A-71706  
Advance Lateral Drawsheet  
Case of 12 Included



#A-71702-L  
Advance Lateral Bracket  
2 Included



#A-71702-P  
Advance Prone Bracket  
2 Included

## What's Required



#A-71704  
Advance Lateral Air Bladder  
1 Included

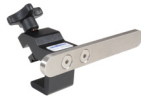


#A-71706  
Advance Lateral Drawsheet  
Case of 12

## What's Optional



#A-71708-1  
Offset Accessory Rail - Left



#A-71708-2  
Offset Accessory Rail - Right



#A-71705-US\*  
Advance Lateral Air Compressor



#A-71709  
Air Compressor Tube Set



#A-71600  
Advance Accessory Cart



#O-UPBL3S  
Lateral Brace 3 Piece Set



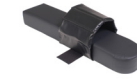
#O-ABMT  
Multi-Task Armboard



#O-AMA97X1.0S  
Clamshell Armboard Pad 1" (2.5 cm)



#O-ABSLT  
Easy Armboard With Trigger



#O-AMA96X3.0S  
Clamshell Armboard Pad 3" (7.6 cm)



#A-70501-US\*\*  
Short Accessory Rail



#A-70502-US\*\*  
Long Accessory Rail



#A-40022 (US)\*\*  
Easy Lock® Socket



#A-40040 (US)†  
Easy Lock® Blade Clamp



#A-10073  
Small "Sandbag" Gel Positioner  
12" x 4 3/4" x 2 3/8"  
(300 x 120 x 60 mm)

Toll-free (800) 433-5774  
Phone (978) 266-4200  
Fax (978) 263-8846  
allenmedicalorders@hill-rom.com

\*Specify Country: US, EU, UK.  
\*\*Specify Rail Type: US, EU, UK, JP, DEN.  
† Specify Rail Type: US, EU, UK, JP.

[www.allenmedical.com](http://www.allenmedical.com)