

**Subject: First Impression® Headwall System (P780D)—Semi-Private Unit
Installation Instructions**

Introduction

These instructions are for installing a semi-private unit First Impression®¹ Headwall System (P780D). Before starting the procedure, read and understand all of the instructions for the parts being installed.

Tools required:	As-built drawings	Chalk line
	Safety glasses	Electric drill
	1" drill bit	#2 drill bit
	Broom and dustpan	Screwdriver
	Heat shield blanket	Wet sponge or cloth
	Pencil	
Parts required:	(2) P780D	Deep First Impression® Headwall System
	(1) 58594	Bag assembly, packed, 780D
	(6) 55690pl	Face ring—wall box, plated
	and	
	(1) P781D04	Hanger assembly, semi-private unit, seismic
	(1) 58712	Bag assembly, hanger, semi-private, seismic
	or	
	(1) P781D03	Hanger bracket, Deep First Impression® Headwall System, semi-private, standard mounting
	(1) 58711	Bag assembly, hanger, semi-private, standard mounting
	58594, Bag assembly, packed, 780D, includes the following items:	
	(12) 29591	Screw, #8, self-drilling
	(8) 5314301	Screw, #12, self-drilling, hex head
	(4) 53899	Plug button, plastic
	(6) 55408	Grommet edging—2"
	(6) 55409	Grommet edging—3"
	58712, Bag assembly, hanger, semi-private, seismic, includes the following items:	
	(12) 16114	Screw, #6-32 x 1/2", phillips, flat head, zinc-plated
	(24) 5314301	Screw, #12, self-drilling, hex head

1. First Impression® is a registered trademark of Hill-Rom Services, Inc.

58711, Bag assembly, hanger, semi-private, standard mounting, includes the following items:

(12)	16114	Screw, #6-32 x ½", phillips, flat head, zinc-plated
(12)	21045	Toggle bolt
(12)	21046	Toggle wing
(24)	5314301	Screw, #12, self-drilling, hex head
(12)	29325pl	Stud guide, plated

Preparing the Wall for Installation



WARNING:

The installation method differs for each wall and construction type. Failure to determine the wall and construction type could result in the collapse of the First Impression® Headwall System (P780D). Personal injury or equipment damage could occur.

1. Before proceeding, refer to the local or state building codes, and determine the wall type and construction type:
 - **Seismic** walls are constructed to prevent damage from an earthquake.
 - **Non-seismic** walls are **not** constructed to prevent damage from an earthquake.
 - **Fire-rated** walls are constructed to prevent the spread of fire.
 - **Non-fire-rated** walls are **not** constructed to prevent the spread of fire.
2. Do **one** of the following:
 - For **non-seismic** walls, contact Hill-Rom Technical Support at 800-445-3720.
 - For **seismic** walls (both **fire-rated** and **non-fire-rated**), install wall backing plates according to the Office of Statewide Health, Planning, and Development (OSHPD)-approved drawings and the as-built drawings.

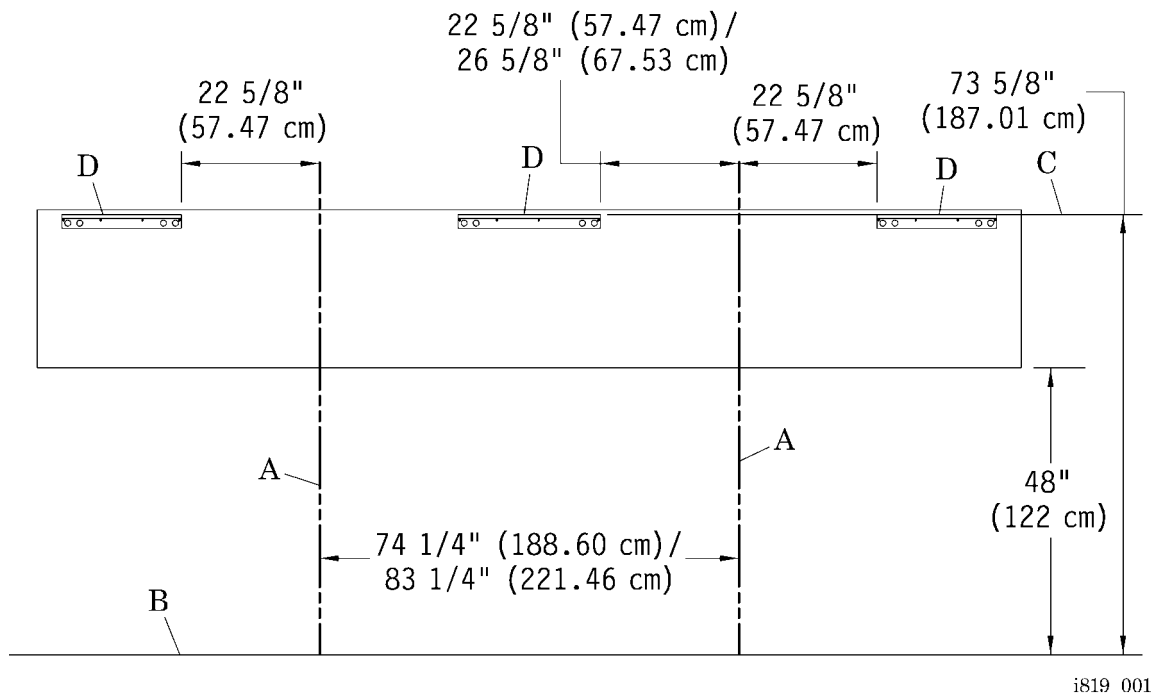
NOTE:

The backing plate (provided by other) must be 6" (15 cm) wide, 14-gauge steel, continuous between steel studs at a maximum of 16" (41 cm) centers.

Installing the Semi-Private Unit Hanger Assemblies (P781D03/04)

1. Refer to the as-built drawings, and make a vertical plumb line on the wall to show the bed centerlines (A) (see figure 1 on page 3):

Figure 1. Wall Dimensions—Hangers

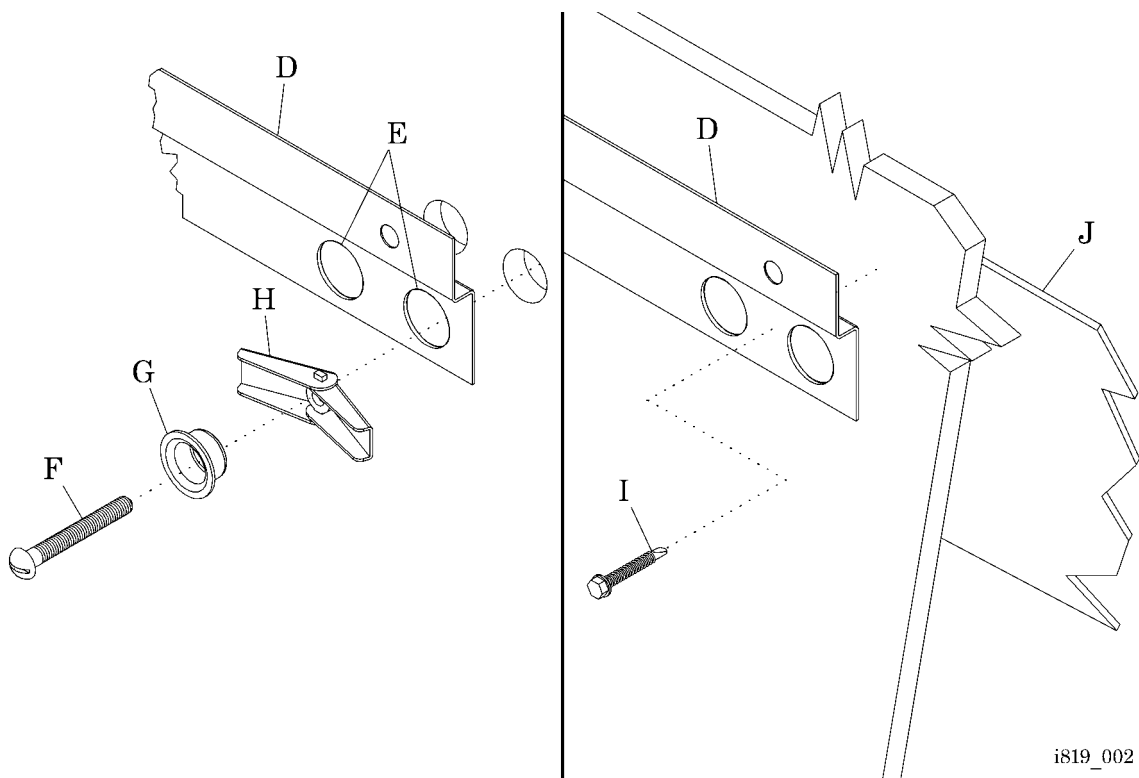


i819_001

- For a **27" (69 cm)** center module, make sure the bed centerlines (A) are **74 1/4" (188.60 cm)** apart.
 - For a **36" (91 cm)** center module, make sure the bed centerlines (A) are **83 1/4" (211.46 cm)** apart.
2. From the finished floor line (B), measure **73 5/8" (187.01 cm)** vertically, and make a horizontal plumb line (C) to show the top edges of the hangers (D).
 3. From the bed centerlines (A), measure **22 5/8" (57.47 cm)** **out** horizontally along the horizontal plumb line (C), and make marks on the wall to indicate the inside edges of the outer hangers (D).
 4. From the bed centerlines (A), measure **in** horizontally along the horizontal plumb line (C), and make marks on the wall to show the edges of the inner hanger (D):
 - For a **27" (69 cm)** center module, measure in **22 5/8" (57.47 cm)**.
 - For a **36" (91 cm)** center module, measure in **26 5/8" (67.63 cm)**.

5. On **non-fire-rated** or **non-seismic-rated** walls, do the following to install each hanger (D):
- Align the top and edges of the hanger (D) with the horizontal plumb line (C) and the marks on the wall.
 - Hold the hanger (D) in position, and make a mark on the wall to show the location of the hanger's pairs of 1" diameter holes (E) (see figure 2 on page 4).

Figure 2. Hanger Installation



- Remove the hanger (D) from the wall.



WARNING:

Wear eye protection. Failure to do so could result in eye injury.

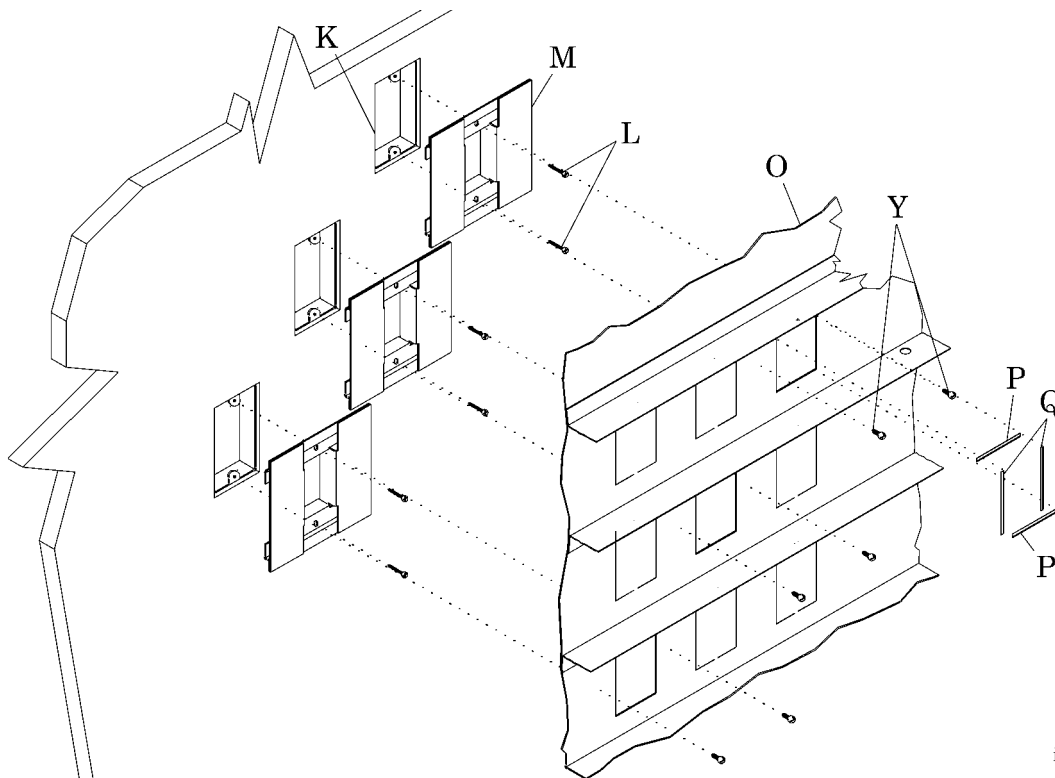
- Put on safety glasses.
- At the marks for the pairs of the 1" diameter holes (E), drill a 1" hole for the hanger (D) at a hole that is free from obstruction.
- Clean up any debris from drilling.
- Assemble the toggle bolts (F), stud guides (G), and toggle wings (H).
- Hold the hanger (D) in position.

- i. Install the toggle bolts (F), stud guides (G), and toggle wings (H) at the holes drilled in the wall. Make sure the toggle wings (H) fully open inside the wall.
 - j. Tighten the toggle bolts (F) to secure the hanger (D) to the wall.
6. On **fire-rated** or **seismic-rated** walls, do the following:
- a. Align the top and inside edges of the hanger (D) with the horizontal plumb line (C) and the mark on the wall (see figure 1 on page 3).
 - b. Refer to the as-built drawings, and install the #12 self-drilling screws (I) to secure the hanger (D) to the backing plate (J) (see figure 2 on page 4).
7. Make sure all hangers (D) are level. Shim as necessary.

Installing the First Impression® Headwall Systems (P780D)

1. At each wall box (K), install two flat head screws (L) to secure the face ring (M) to the wall box (K) (see figure 3 on page 5).

Figure 3. Face Ring and Center Raceway Installation



i819_003

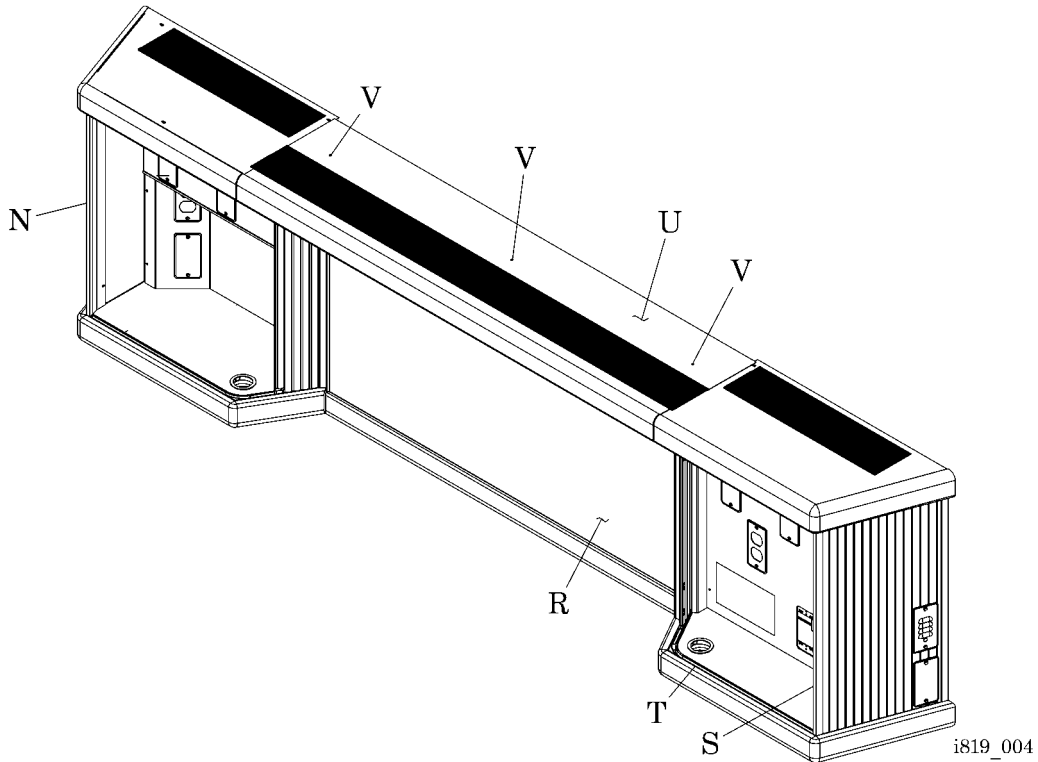


CAUTION:

Use caution when removing the corrugated packing materials from the headwall. Failure to do so could result in equipment damage.

2. With the headwalls (N) sitting on the bottom of the cartons, carefully remove the corrugated packing materials (see figure 4 on page 6). Do **not** remove the wooden packing brace from the headwalls (N).

Figure 4. First Impression® Headwall System (P780D)



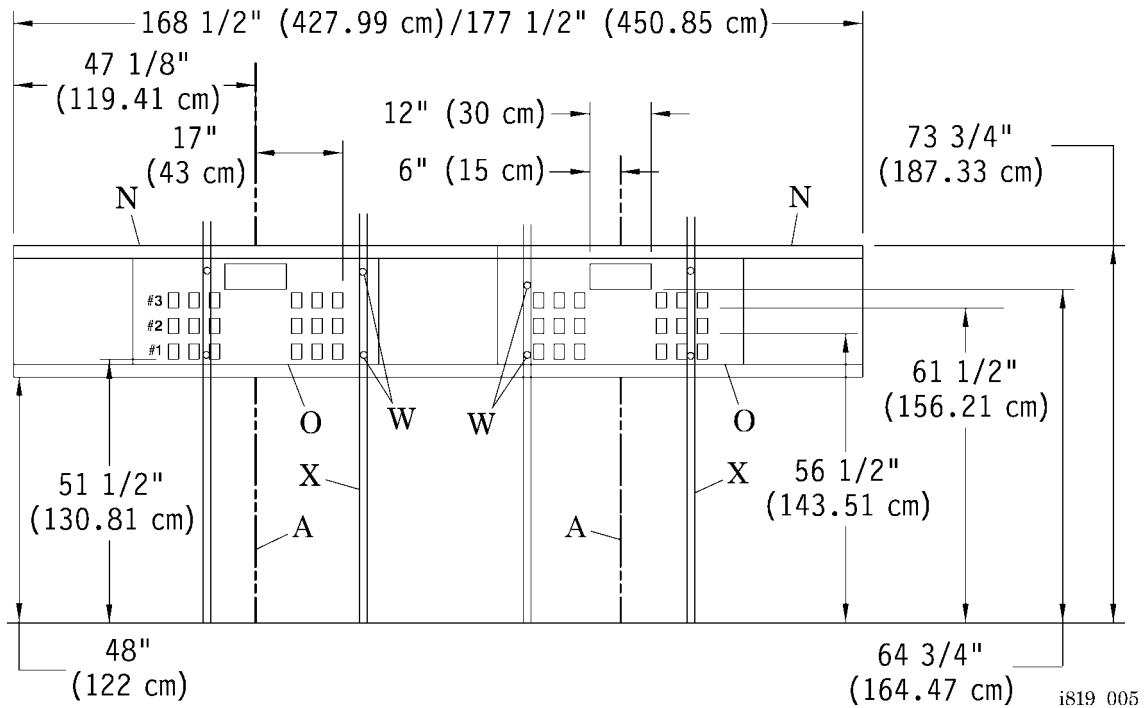
NOTE:

The wooden packing brace is used to lift the headwall onto the hangers.

3. At each headwall (N), do the following:
 - a. Find which knockouts in the back of the center raceway (O) align with the three wall boxes (K) (see figure 3 on page 5). Then remove the three knockouts from the center raceway (O).
 - b. Install the 2" grommet edging (P) and 3" grommet edging (Q) around the three knockout locations.
 - c. Using the wooden packing brace, lift the headwall (N) onto the hangers (D). Be sure to engage the formed hook at the top rear of the headwall (N) with the top edge of the hangers (D) (see figure 1 on page 3).
 - d. Examine the headwall (N), and make sure it completely engages the hangers (D).

4. Make sure the headwalls (N) are correctly positioned on the wall and a gap is between them to permit connecting the wiring (see figure 5 on page 7).

Figure 5. Wall Dimensions—First Impression® Headwall System (P780D)



5. Remove the wooden packing brace and the four studs from the headwalls (N).
6. Install the plastic plug buttons in the holes on the headwalls (N).
7. Remove the center high pressure laminate (HPL) panels (R) from the headwalls (N) (see figure 4 on page 6):
 - a. Insert a screwdriver into the hole at the bottom of the center HPL panel (R), and release the retaining latch.
 - b. Turn the center HPL panel (R) up to approximately 60°.
 - c. Disengage the hinges on the center HPL panel (R).
 - d. Lift the center HPL panel (R) from the headwall (N).
 - e. Store the center HPL panel (R) in a safe location.
8. If necessary, remove the tambour doors (S) from the headwalls (N):
 - a. Slide the tambour door (S) out of the headwall (N).
 - b. Lift the tambour door (S) from its bottom track (T).

- c. Turn the tambour door (S) forward, and remove it from the headwall (N).
- 9. Remove the center raceway covers (U) from the headwalls (N) to expose the electrical hook-up area:
 - a. Remove the three screws (V) that secure the center raceway cover (U) to the headwall (N).
 - b. Remove the center raceway cover (U) from the headwall (N).
- 10. Make the plug connections for the line voltage—normal power and critical branch circuits—between the headwalls (N) (see figure 5 on page 7). For a power distribution by raceway, refer to table 1 on page 8.

Table 1. Power Distribution

Raceway	Branch
1	Low voltage
2	Normal or critical branch, depending on the voltage of the lighting circuit
3	Normal or critical branch, opposite of raceway #2

- 11. Put the ground wire through the headwalls (N), and connect it to the ground bar in the center raceway (O).
- 12. Tie the ends of the pull cords in the low voltage sections together.
- 13. Slide the headwalls (N) together, and make sure they are in the correct position on the wall.
- 14. Using the bolts and nuts provided, secure the headwalls (N) together at the back of the Nurse Call area.
- 15. Refer to the as-built drawings, and at the wall studs (X) farthest from the bed centerlines (A) behind each end of the center raceways (O), do the following:



WARNING:

Wear eye protection. Failure to do so could result in eye injury.

- a. Put on safety glasses.
- b. At the lowest and highest section at each end of the center raceway (O), drill a 0.221" hole through the back of the headwall (N).
- c. Clean up any debris from drilling.
- d. At the four holes drilled in the center raceway (O), install a #12 self-drilling screw (W) to secure the headwall (N) to the wall studs (X).

16. At each wall box (K), install two #8 self-drilling screws (Y) through the back of the center raceway (O) to secure it to the flange of the face ring (M) (see figure 3 on page 5).



CAUTION:

Protect the adjacent electrical raceways from excessive heat from the brazing torch, and prevent heat conduction to the interior of the headwall. Failure to do so could result in equipment damage.

17. Using heat shield blanket, protect the adjacent electrical raceways from excessive heat from the brazing torch.
18. To prevent heat conduction to the interior of the headwall (N), wrap a wet sponge or cloth around copper tubing beyond the joint (see figure 4 on page 6).
19. Have the **installing contractor** make the medical gas hookup to the building service drops in accordance with all applicable state and local codes, and the following:
- National Fire Protection Association (NFPA) 99
 - Canadian Standards Association (CSA) Z305.1, *Non-Flammable Medical Gas Piping Systems*
 - CSA Z318.6, *Commissioning of Medical Gas Systems in Health Care Facilities*
20. Have the **installing contractor** do the following:
- a. Refer to the as-built drawings for the internal wiring configuration and hook-up information.
 - b. Make the connections to the electrical and communication services in accordance with all applicable state and local electrical codes, and the following:
 - NFPA 70, *National Electrical Code*¹ (NEC²)
 - CSA C22.1, *Canadian Electrical Code—Safety Standard for Electrical Installations*
 - CSA Z318.5, *Commissioning of Electrical Gas Equipment and Standards in Health Care Facilities*
 - CSA Z318.7, *Commissioning of Communication Systems in Health Care Facilities*
 - c. Using the pull cords provided, pull in the telephone and nurse call wiring.

1. National Electrical Code® is a registered trademark of National Fire Protection Association, Inc.

2. NEC® is a registered trademark of National Fire Protection Association, Inc.

- d. Make all field terminations within the headwall (N).
- 21. When the electrical receptacle is wired to the safety switches, install the blue faceplate engraved with **For bed use only. No life support equipment.**
- 22. At each headwall (N), install the three screws (V) to secure the center raceway cover (U).
- 23. Install the center HPL panels (R) and, if necessary, the tambour doors (S) on the headwalls (N).