



**Subject: ImageMakers® Headwall Collection—Unpacking and Installation
Instructions**

- Tools required:
- As-built drawings
 - 1/8" drill bit
 - Caulk
 - Safety glasses
 - Screwdriver
 - Pliers
 - Tape measure
 - Wet sponge or cloth (P790 and P793 only)
 - Heat shield blanket (P790 and P793 only)
 - Wire strippers (P790, P791, and P793 only)
 - Brazing equipment
 - Protective pad
 - Chalk line
 - Drill
 - Caulking gun
 - Broom and dustpan
 - Pencil
 - Level
 - Jigsaw (P793 only)
- Parts required:
- (1) P790 Full size ImageMakers®¹ Headwall with services (bag assembly included)
 - or**
 - (1) P791 Full size ImageMakers® Headwall without services (bag assembly included)
 - or**
 - (1) P793 Small ImageMakers® Headwall with services (bag assembly included)
 - or**
 - (1) P794 Small ImageMakers® Headwall without services (bag assembly included)

1. ImageMakers® is a registered trademark of Hill-Rom Services, Inc.

Unpacking

1. Put the carton in an upright position on the floor near the site of the installation.
2. Cut the banding from the carton.
3. Carefully remove all packing materials.
4. Put a protective pad on the floor.
5. Remove the headwall from the carton, and set the headwall on the protective pad.
6. **P790 and P791 only**—remove the shipping screws that attach the electrical extension ring to the panel.
7. For installation instructions, go to the applicable page:
 - **P790 and P791**—page 3
 - **P793 and P794**—page 8

P790 and P791 Installation

1. Make a mark on the wall to show the headwall center line (A) (see figure 1 on page 5).
2. Measure from the finished floor line (B) to the desired height of the headwall bottom (C). Add 17" (43 cm) to this measurement, and make a mark on the center line to show its location.

NOTE:

The recommended height is 48" (122 cm) above the finished floor.

3. Do as follows to remove any applicable panels:
 - a. Remove the cover caps and wood screws from the removable center panel (D). Then, move the top of the center panel (D) forward, and lift the center panel (D) upward to remove it from the headwall.
 - b. **P790 only**—remove the two cover caps and two wood screws that attach each access rail (E) to the headwall. Then, remove each access rail (E) from the headwall.

NOTE:

The access rails are above and below the Gas/Electrical panels behind the cabinet doors.

4. Find the in-wall blocking and/or studs.
5. Do as follows to attach the headwall to the wall:



WARNING:

Failure to wear eye protection may cause eye injury.

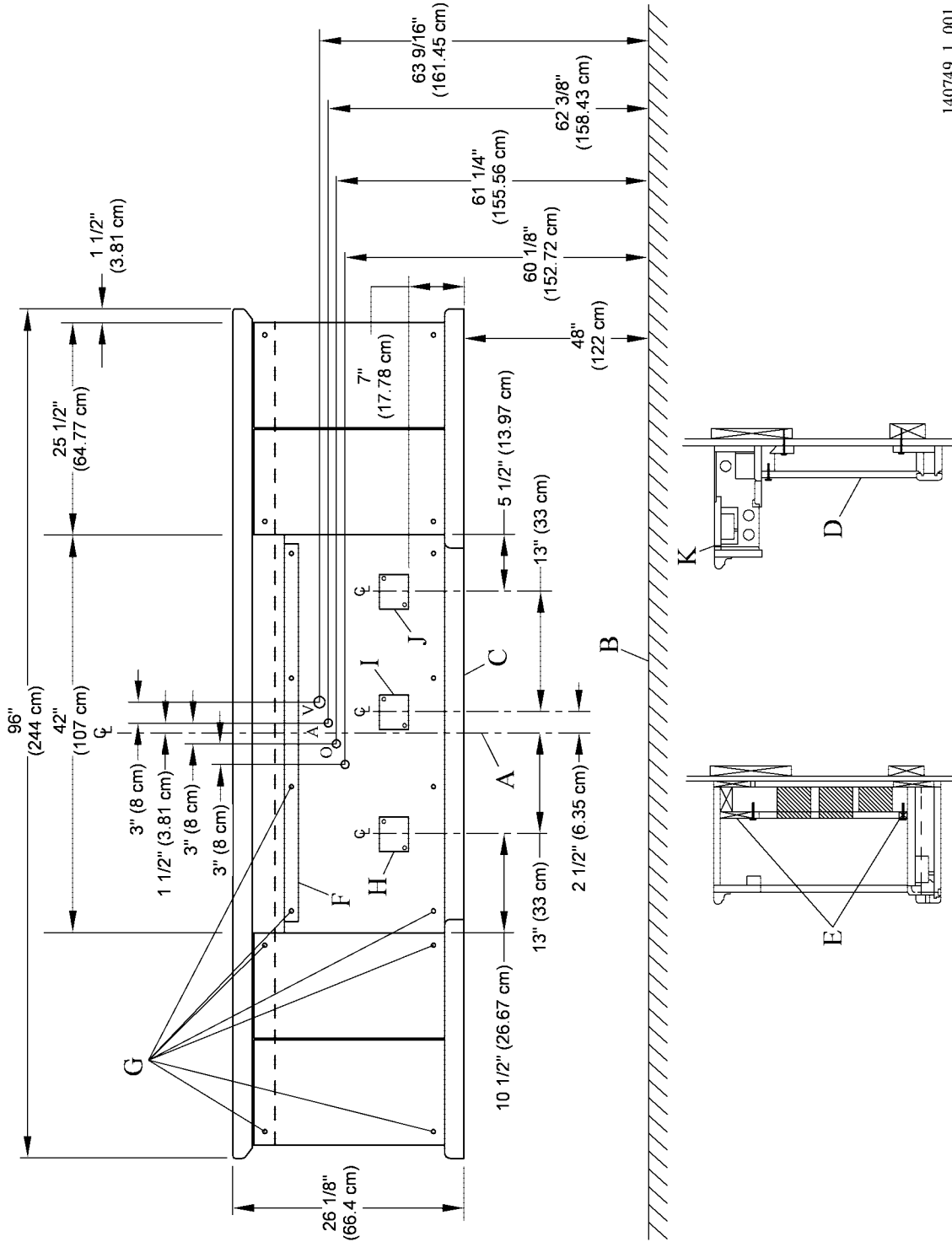
- a. Put on safety glasses.
- b. Drill the wall cleat (F) for four TEKS®¹ screws (G) (supplied).
- c. Clean up any debris from drilling.
- d. Put the wall cleat (F) on the wall with the cleat's (F) center, bottom edge at the mark made in step 2. Make sure the wide face of the wall cleat (F) is away from the wall.
- e. Make sure the wall cleat (F) is level.
- f. Install four TEKS® screws (G) through the drilled holes of the wall cleat (F) and into the in-wall blocking or studs to attach it to the wall.

1. TEKS® is a registered trademark of Illinois Tool Works, Inc.

- g. Make sure the wall cleat (F) stays level as the headwall is lifted over the cleat (F) and back against the wall. Then, lower the headwall so the wall cleat (F) engages the groove in the center rail of the headwall.
- h. Make sure the headwall is level, and then install at least twelve additional #12 TEKS^{®1} screws (G) or toggles in the back rails that are along the full length of the headwall.

1. TEKS[®] is a registered trademark of Illinois Tool Works, Inc.

Figure 1. P790 and P791 Installation



140749_1_001

6. Prepare for the electrical connections as follows:



SHOCK HAZARD:

Failure to disconnect electrical power from the facility wiring could cause personal injury or equipment damage.

- a. Make sure the electrical power is disconnected from the facility wiring.
- b. Remove the cover plates from the extension rings (H, I, and J). For extension ring identification, see table 1 on page 6.

Table 1: Extension Ring Identification

Callout	Extension Ring
H	Low voltage
I	Normal power
J	Emergency

- c. Make sure the in-wall junction boxes are in the correct positions.

NOTE:

The in-wall junction boxes must be in the position shown in figure 1 on page 5 so that the screw holes in the junction boxes will line up with those in the extension rings that are part of the casework.

- d. Align each extension ring with its corresponding junction box.
- e. Install the screws to attach the extension rings to the junction boxes.

7. Have the **installing contractor** do as follows:

- a. Refer to the as-built drawings for the internal wiring configuration and hookup information.
- b. Make the connections to the electrical services in accordance with all applicable state and local electrical codes, and these:
 - **US**—NFPA 70, *National Electrical Code*®¹ (NEC®²)
 - **Canada**—Canadian Standards Association (CSA) C22.1, *Canadian Electrical Code—Safety Standard for Electrical Installations*; CSA Z318.0-05, *Commissioning of Health Care Facilities*

8. Install the cover plates.

1. National Electrical Code® is a registered trademark of National Fire Protection Association, Inc.

2. NEC® is a registered trademark of National Fire Protection Association, Inc.

9. **P790 only**—prepare for the medical gas hookup as follows:



WARNING:

Failure to shut off the medical gas supply could cause personal injury or equipment damage.

- a. Make sure the medical gas supply is shut off and the valve is tagged out.



CAUTION:

Protect the adjacent electrical raceways from excessive heat from the brazing torch, and prevent heat conduction to the interior of the headwall. Failure to do so could cause equipment damage.

- b. Use the heat shield blanket to protect the adjacent electrical raceways from excessive heat from the brazing torch.
- c. To prevent heat conduction to the interior of the headwall, wrap a wet sponge or cloth around the copper tubing beyond the joint.

10. **P790 only**—have the **installing contractor** make the medical gas hookup to the building service drops in accordance with all applicable state and local codes and these:

- **US**—National Fire Protection Association®¹ (NFPA®²) 99
- **Canada**—CSA Z7396.1 *Medical Gas Pipeline Systems*;
CSA Z318.0-05, *Commissioning of Health Care Facilities*

11. Install the removable center panel (D) in its position on the headwall as follows:

- a. Put the lower lip of the removable center panel (D) into its matching groove in the headwall.
- b. Install the wood screws and cover caps to attach the removable center panel (D) to the headwall.

12. Adjust the hinges on the cabinet doors so the doors are level and have equal gaps. If necessary, put shims between the cabinet and wall so the doors fit correctly.

NOTE:

The hinges are three-dimensionally adjustable.

13. Do as follows to complete the installation:

- a. Remove the four **outer** shipping screws from the light bridge supports (K). Do not remove the four center screws.

1. National Fire Protection Association is a registered trademark of National Fire Protection Association, Inc.

2. NFPA® is a registered trademark of National Fire Protection Association, Inc.

- b. If it is necessary to adjust the Safety Bottoms, remove the front cover caps and turn the screws in the applicable direction: clockwise to raise, or counter-clockwise to lower. The bottoms should move about 1/8" (3.2 mm) for the safety switches to work correctly.
- c. If the receptacle that is wired to the safety switches is in the wall, cover the receptacle with the supplied blue faceplate that is engraved with; **For bed use only. No life support equipment.**

P793 and P794 Installation

1. Put a mark on the wall to show the headwall (A) location (see figure 2 on page 9).

NOTE:

The recommended height is 48" (122 cm) above the finished floor.

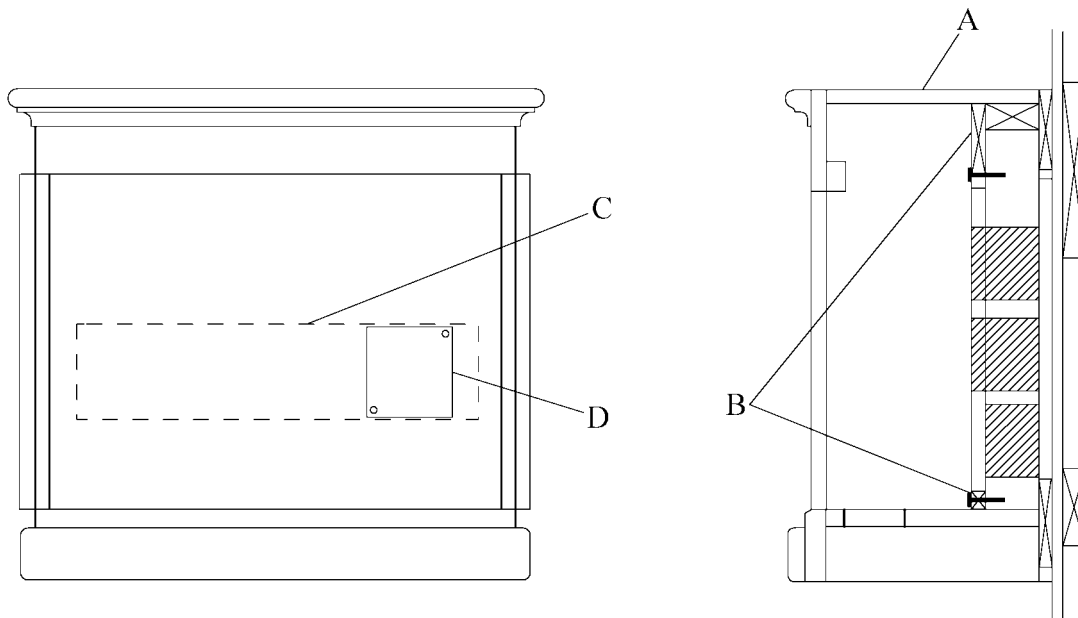
2. For the **P794**, go to step 3. Otherwise, do as follows for the **P793**:
 - a. Remove the two cover caps and two wood screws that attach each access rail (B) to the headwall (A). Then, remove each access rail (B) from the headwall (A).

NOTE:

The access rails are above and below the Gas/Electrical panels behind the cabinet doors.

- b. Remove the four cover caps and four wood screws that attach the Gas/Electrical panels to the headwall (A). Then, remove the Gas/Electrical panels from the headwall (A).
3. Find the in-wall blocking and/or studs.

Figure 2. P793 and P794 Installation



140749_1_002

4. Do as follows to attach the headwall (A) to the wall:



WARNING:

Failure to wear eye protection may cause eye injury.

- a. Put on safety glasses.
- b. **P793 only**—cut out an opening (C) in the back of the headwall (A) for the field connections.
- c. Drill holes into the headwall back rails for the TEKS®¹ screws (supplied).
- d. Clean up any debris from the cutting and drilling.
- e. Put the headwall (A) against the wall at the mark made in step 1.
- f. Install the TEKS® screw through the drilled headwall holes and into the in-wall blocking and/or studs.

1. TEKS® is a registered trademark of Illinois Tool Works, Inc.

- g. Make sure the headwall (A) is level, and then install at least four additional #12 TEKS®¹ screws or toggles in the back rails that are along the full length of the headwall.
5. For the **P794**, go to step 11. For the **P793**, prepare for the electrical connections as follows:



SHOCK HAZARD:

Failure to disconnect electrical power from the facility wiring could cause personal injury or equipment damage.

- a. Make sure the electrical power is disconnected from the facility wiring.
- b. Remove the cover plates from the extension rings (D).
- c. Make sure the in-wall junction boxes are in the correct positions and extend 3/4" (19.1 mm) beyond the face of the dry wall.

NOTE:

The in-wall junction boxes must be in the position shown in figure 2 on page 9 so that the screw holes in the junction boxes will line up with those in the extension rings that are part of the casework.

- d. Align each extension ring (D) with its corresponding junction box.
 - e. Install the screws to attach the extension rings (D) to the junction boxes.
6. Have the **installing contractor** do as follows:
 - a. Refer to the as-built drawings for the internal wiring configuration and hookup information.
 - b. Make the connections to the electrical and communication services in accordance with all applicable state and local electrical codes and these:
 - **US**—NFPA 70, *National Electrical Code*®² (NEC®³)
 - **Canada**—Canadian Standards Association (CSA) C22.1, *Canadian Electrical Code—Safety Standard for Electrical Installations*; CSA Z318.0-05, *Commissioning of Health Care Facilities*
7. Install the cover plates.

1. TEKS® is a registered trademark of Illinois Tool Works, Inc.

2. National Electrical Code® is a registered trademark of National Fire Protection Association, Inc.

3. NEC® is a registered trademark of National Fire Protection Association, Inc.

8. Prepare for the medical gas hookup as follows:



WARNING:

Failure to shut off the medical gas supply could cause personal injury or equipment damage.

- a. Make sure the medical gas supply is shut off and the valve is tagged out.



CAUTION:

Protect the adjacent electrical raceways from excessive heat from the brazing torch, and prevent heat conduction to the interior of the headwall. Failure to do so could cause equipment damage.

- b. Use the heat shield blanket to protect the adjacent electrical raceways from excessive heat from the brazing torch.
- c. To prevent heat conduction to the interior of the headwall, wrap a wet sponge or cloth around the copper tubing beyond the joint.

9. Have the **installing contractor** make the medical gas hookup to the building service drops in accordance with all applicable state and local codes and these:

- **US**—National Fire Protection Association®¹ (NFPA®²) 99
- **Canada**—CSA Z305.1, *Non-Flammable Medical Gas Piping Systems*; CSA Z318.0-05, *Commissioning of Health Care Facilities*

10. Install the Gas/Electrical panels in their positions on the headwall. Then, install the four wood screws and four cover caps in each to attach the Gas/Electrical panels to the headwall (A).

11. Adjust the hinges on the cabinet doors so the doors are level and have equal gaps. If necessary, put shims between the cabinet and wall so the doors have a perfect fit.

NOTE:

The hinges are three-dimensionally adjustable.

1. National Fire Protection Association® is a registered trademark of National Fire Protection Association, Inc.

2. NFPA® is a registered trademark of National Fire Protection Association, Inc.



NOTES:
